

CE-1100B Install Guide

Included Items:

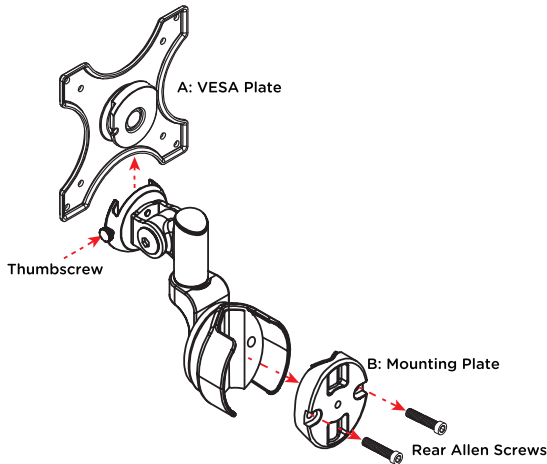
- Pole Mount for LCD/PVM x 1
- M4x6mm VESA screws x 4
- 4mm Allen Wrench x 1
- 6mm Allen Wrench x 1
- Foam Pads x 4

CAUTION: This mount is intended for use only with the maximum weights indicated. Use with products heavier than the maximum weights indicated may result in instability causing possible injury. This product is intended to mount to round pole/pipe with a diameter from 5/8" to 1-1/8."

! Maximum Load Capacity: 11 lbs / 5 kgs !

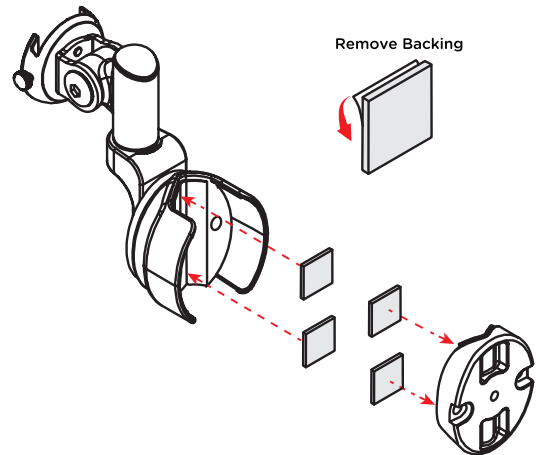
1. Disassemble Bracket

Loosen the thumbscrew on the side of the bracket to remove the VESA plate (A). Using the supplied 4mm Allen Wrench, loosen or remove the rear Allen screws which hold the mounting plate (B) onto the bracket.



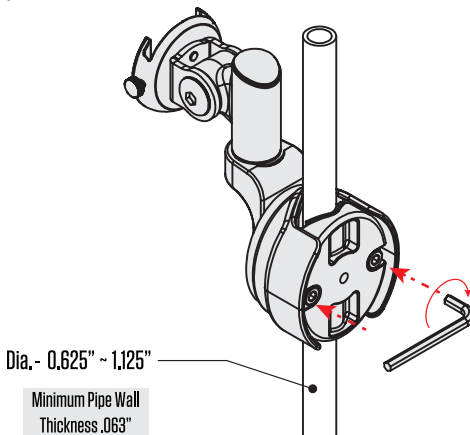
2: Attach Foam Pads

Remove the adhesive backing film from the four included foam pads. Apply two pads to the inside of the bracket and the remaining two pads to the inside of the Mounting Plate.



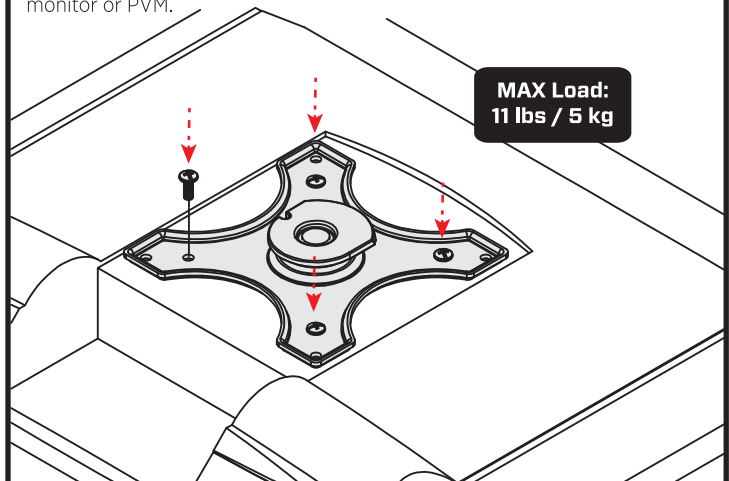
3. Attach Bracket

Place the mounting bracket in the desired position on the pole. With the 4mm Allen Wrench, reattach the Mounting Plate removed in step 1. Tighten firmly by hand.



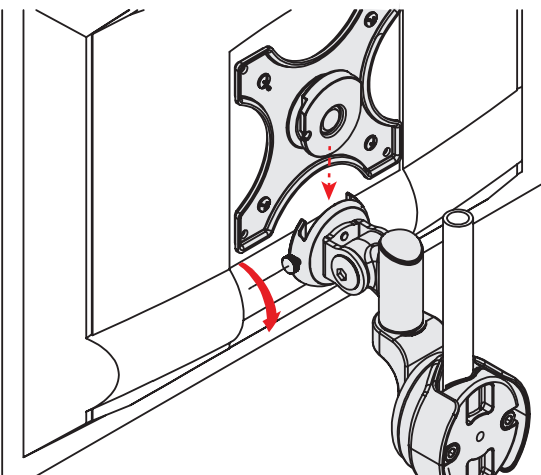
4: Attach VESA Plate

Using the included M4x6mm Phillips Head Screws, attach the VESA bracket to either the 75mm or 100mm VESA screw pattern on the back of your monitor or PVM.



5. Attach Monitor to Bracket

Slide the center of the VESA mount on the monitor into the receiving slot on the bracket. Hand tighten the side thumbscrew to secure the monitor in place.



6. Set Angle

Move the monitor to the desired angle, and with the supplied 6mm Allen Wrench, tighten the side Allen screw to lock the position.

