

CE-CMHL-DH(-M)

Install Guide

Included Items:

- CE-CMHL-DH(-M) brackets (2)
- VESA Plates (2)
- M4 x 6mm Phillips head screws (8)
- 1/4-20 x 2" Hex Head Bolts (2)
- 1/4-20 x 2-1/2" Hex Head Bolts (2)
- 1/4-20 Lock Nuts (4)

- 1/4" Flat Washers (4)
- 1/4" Lock Washers (4)
- #8-32 x 3/8" Phillips Head Screws (4)
- 25' Safety Cable (1)
- Cable Clamp (1)
- M4 x 10mm Phillips Head Screws (2)

Required Items:

- #2 Phillips Screwdriver
- 7/16" Wrench
- 5/16" Wrench
- 10mm Wrench



Maximum Load Capacity: 60 lbs / 27.2 kgs



CAUTION!

USE ONLY AS DESIGNED

THIS MOUNT IS DESIGNED TO ATTACH TWO MONITORS OR PVMS TO A CLINTON ELECTRONICS' HEAVY-DUTY TELESCOPING CEILING POLE MOUNT CE-CMHL-3 OR CE-CMHL-6. IT IS NOT DESIGNED TO MOUNT TO ANY OTHER PRODUCT. IT IS INTENDED FOR USE ONLY WITH THE MAXIMUM WEIGHT INDICATED. USE WITH PRODUCTS HEAVIER THAN THE MAXIMUM WEIGHTS INDICATED MAY RESULT IN INSTABILITY CAUSING POSSIBLE INJURY.

1. INSTALL TELESCOPING POLE

Install Heavy-Duty Telescopic Ceiling Mount to building structure per installation instructions included with the mount.

Do not attach the VESA plate to the Telescopic Ceiling Mount pole as shown in the Telescopic Pole Mount Instructions.

Run necessary cables for each monitor, and both safety cables through the pole prior to installation of CE-CMHL-DH(-M) brackets in step 2.

NOTE: One Safety Cable will come from the telescoping pole, and one from the CE-CMHL-DH(-M) kit.

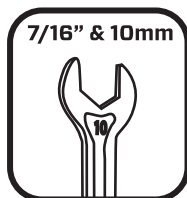
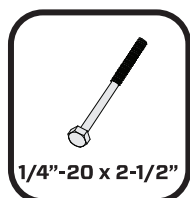
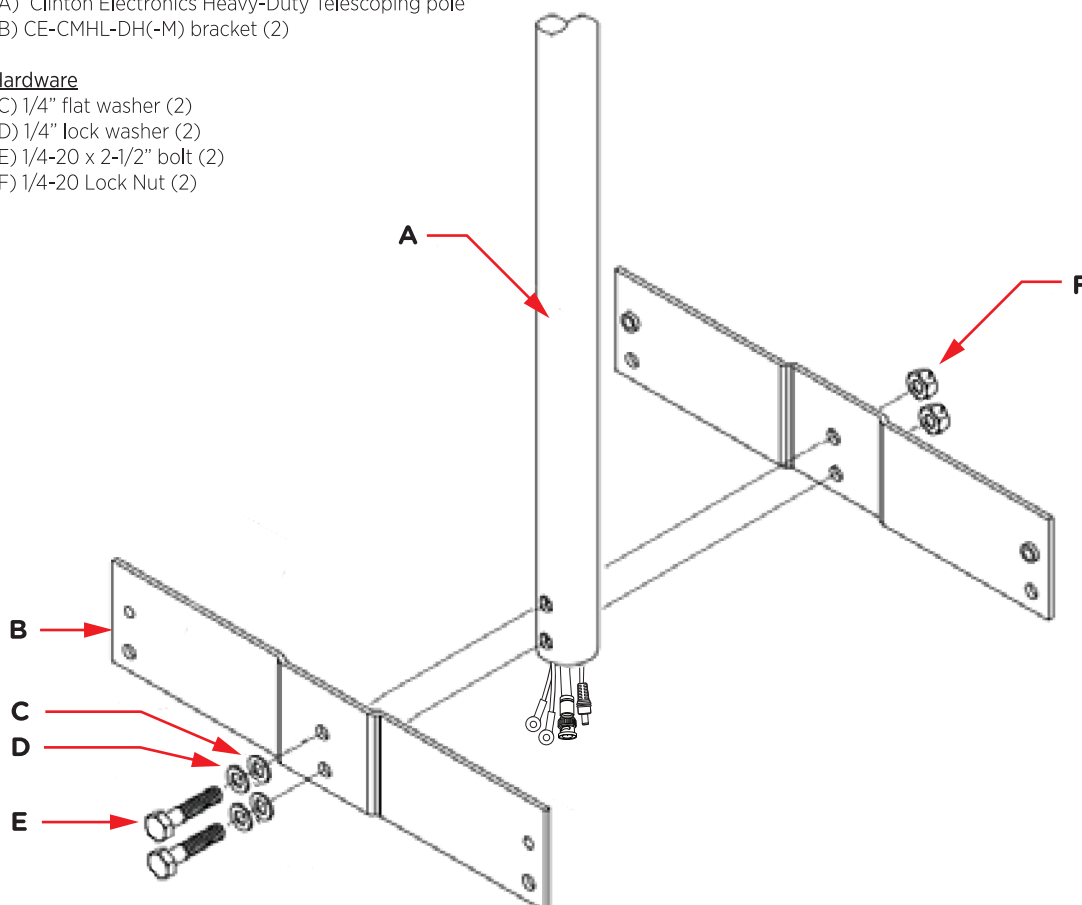
2. ATTACH DUAL HEAD BRACKETS TO POLE

Attach the two CE-CMHL-DH(-M) brackets to the lower pole section of the Telescopic Ceiling Mount as shown below.

- (A) Clinton Electronics Heavy-Duty Telescoping pole
(B) CE-CMHL-DH(-M) bracket (2)

Hardware

- (C) 1/4" flat washer (2)
(D) 1/4" lock washer (2)
(E) 1/4-20 x 2-1/2" bolt (2)
(F) 1/4-20 Lock Nut (2)



3. INSTALL VESA PLATES

Install the VESA Plates to the ends of the CE-CMHL-DH(-M) Brackets.

(G) VESA Bracket (2)

Hardware

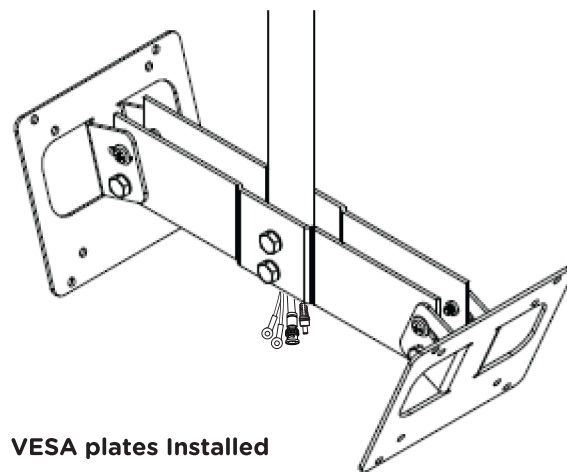
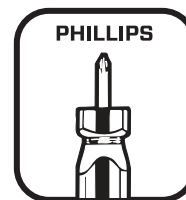
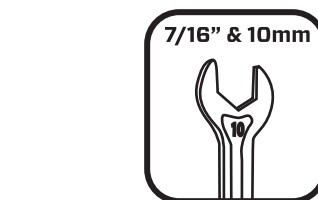
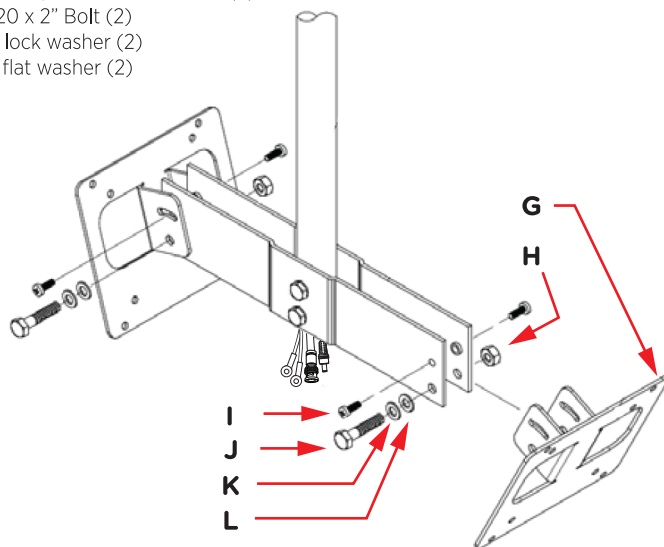
(H) 1/4-20 Lock nut (2)

(I) #8-32 x 3/8" Pan Head Screw (4)

(J) 1/4-20 x 2" Bolt (2)

(K) 1/4" lock washer (2)

(L) 1/4" flat washer (2)



VESA plates Installed

3.1 Tighten the Phillips Head screws when the appropriate angle of the bracket is determined.

3.2 Tighten the 1/4" bolts only enough to remove the gap between the bolt and the bracket. Do not over tighten.

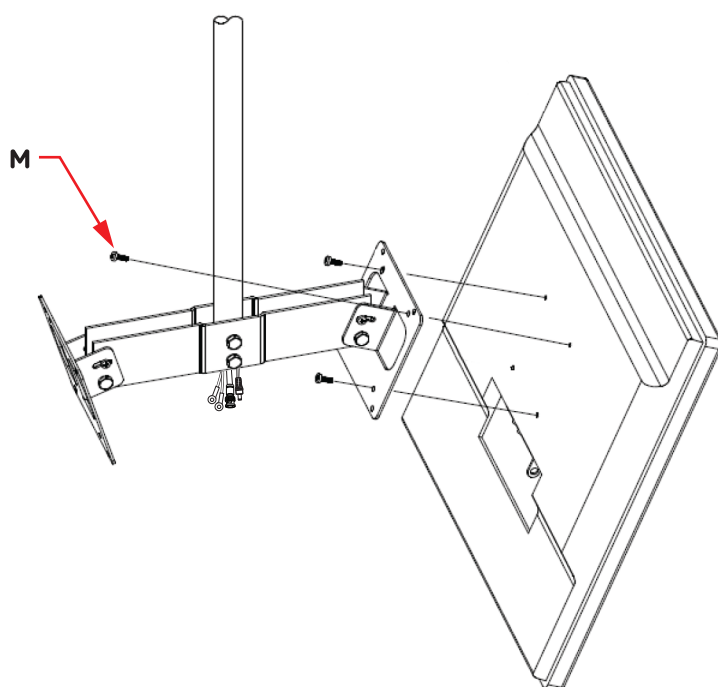
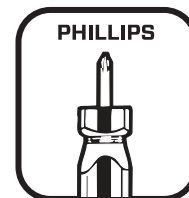
4. ATTACH MONITORS

Attach the monitors to the VESA Plates using three of the M4 x 6mm Phillips Head screws for each VESA plate.

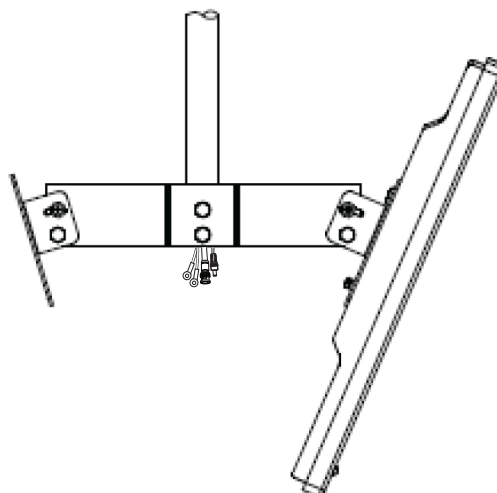
Leave one hole available for installation of the safety cable

Hardware

(M) M4 x 6mm (6)



Monitor Installed



5. Install Safety Cables

5.1 Using the M4x10 Phillips Head Screw, attach the eyelet end of the Safety Cable to the last remaining VESA screw hole in the back of the monitor as shown.

5.2 Attach the plain end of the Safety Cable to the permanent structure directly above the Pole using the included Cable Clamp to loop around the structure and secure the cable to itself. Remove all slack from the cable and tie a simple knot in the loose end of the cable at the clamp to prevent any potential slippage of the cable through the clamp. Snug the knot to the cable clamp to prevent any movement of the cable. Tighten cable clamp nuts with a 5/16" wrench or socket.

NOTE: One cable clamp will come from the telescoping pole contents, and one from the CE-CMHL-DH(-M) kit.

5.3 Repeat safety cable installation procedure for other monitor, and connect any power and video cables to each monitor.

LOOPING OF THE CABLE IS REQUIRED TO MEET UL SAFETY REQUIREMENTS AND MUST BE PERFORMED DURING INSTALLATION

