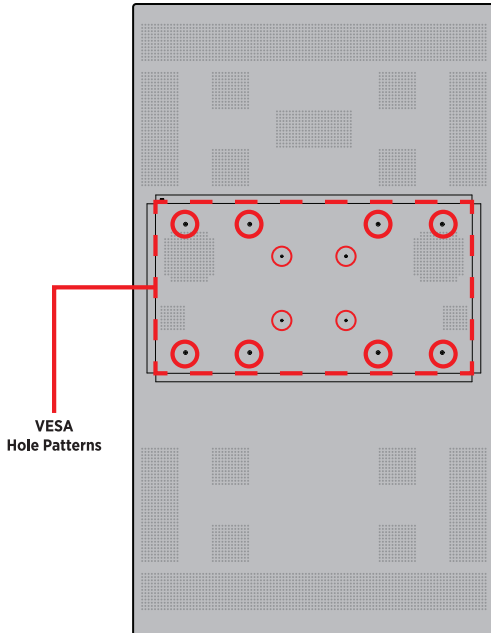


CE-P43NC-SR-B Basic Setup Guide

1. Install Monitor

Install the monitor to desired VESA mount following instructions supplied with VESA mount.

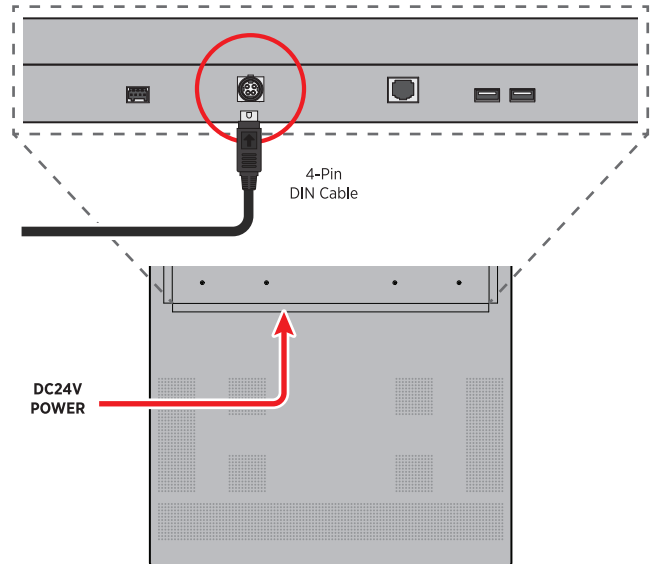


VESA 100 (M4)
200 (M6), 200 x 400 (M6)

**VESA mount sold separately.*

2. Connect Power Supply to Monitor

Connect 4-Pin DIN cable from DC24V power supply into the connection marked 'DC24V'. **Do not plug the power supply into the main power source during this step.**



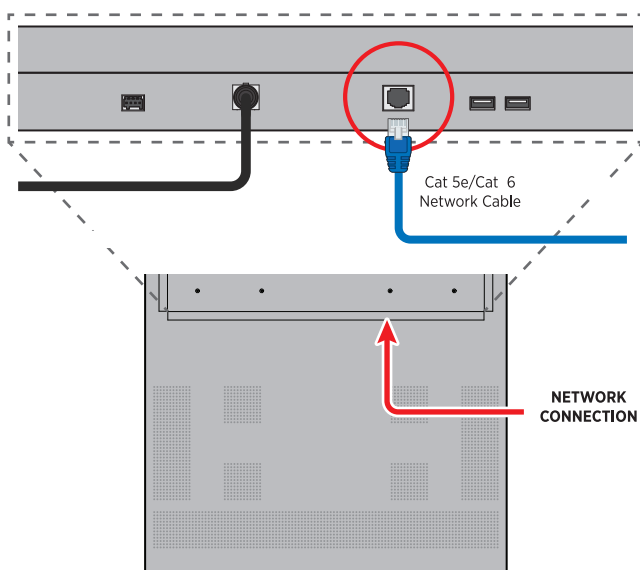
WARNING!

ONLY USE DC24V!

Only use the included DC24V, 9.1A power supply (or equivalent supply with higher amperage) with this monitor. Using an under-rated power supply can/will cause damage to both the power supply and monitor.

3. Connect Network Cable

Connect an ethernet cable to the port marked 'NETWORK' if this monitor will use a "hard-wired" network connection. If this monitor will be connected using WiFi attach the included antenna (see Optional Connections on next page).

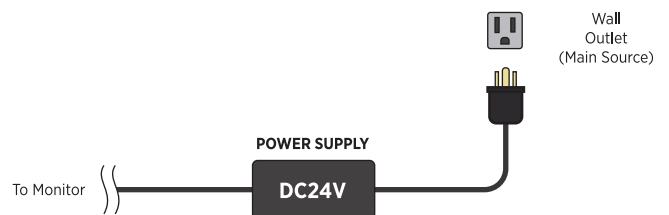


This is NOT a PoE device!
Power must come from DC24V source.

**A network connection is required for the PVM to receive media updates and complete the setup process.*

4. Connect Power Supply to Main Source

After making the power and network connections, plug the power supply into a wall outlet. Wait for the boot-up to complete.

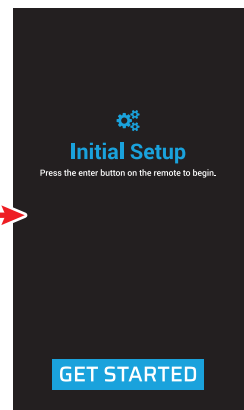


Start of Boot-up



.....

Boot-up Complete



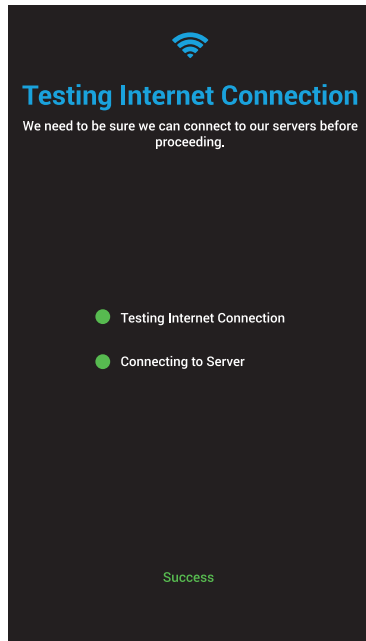
5. Connect to Internet

Follow the on-screen prompts using the included remote and connect to the desired network. After selecting a network (and entering a password if applicable), an Internet check test will be performed.

Remote is required for setup



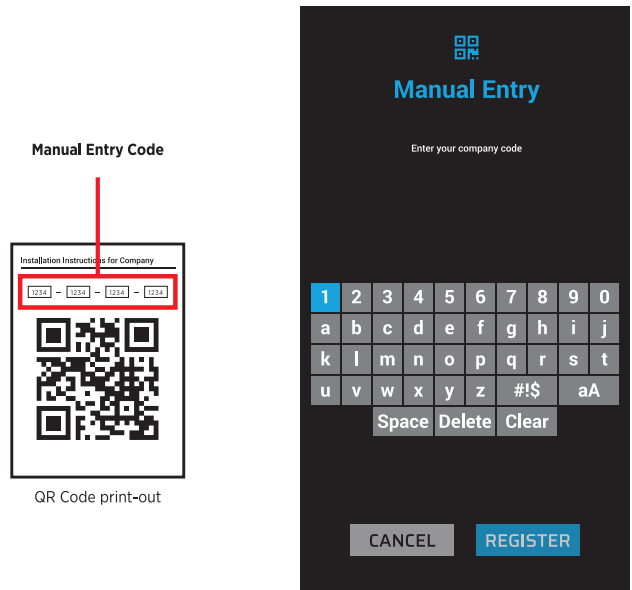
Keep the remote in a safe place for later use



**If the device can not connect to the internet and/or the Clinton server— contact the company's IT admin.*

6. Enter Company Code and Complete Setup

Enter the company-specific Manual Entry Code when prompted. Ensure the correct company code is being used, using the wrong company code will result in the PVM receiving incorrect updates.



**The code is required to associate the PVM with a company so it can receive the correct content. If you do not have a code, contact your supervisor or Clinton Connect account admin to request a code. The code can be found at the top of the page on the QR code print-out.*

7. Content Download/Update

Once correctly setup, the monitor will automatically download its pre-assigned content. During the download a cloud icon and percentage complete number will appear at the top/left corner of the screen.

If there is no content assigned to this device the screen will display solid grey.

Content Downloading

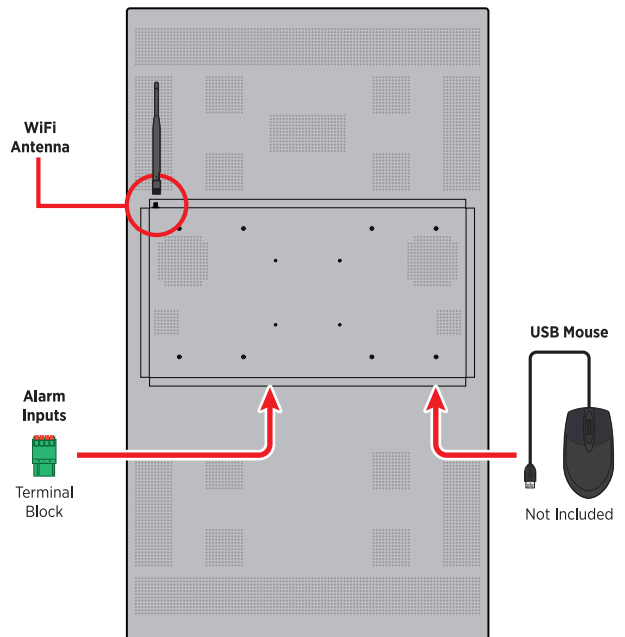


No Content Assigned



Optional Connections

If this will be a WiFi network connected device, connect the WiFi antenna to the connector on the back of the monitor.



If desired, connect alarm input connections using the included 4-Pin terminal block.

If the remote is lost or misplaced— connect a USB mouse into one of the USB ports on the rear of the device to finish the Initial Setup.