

## CE-CP-U

U-Bracket for Telescoping Camera Poles



**Maximum Load Capacity: 10 lbs / 4.53 kgs**



### KEY FEATURES:

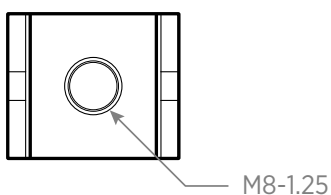
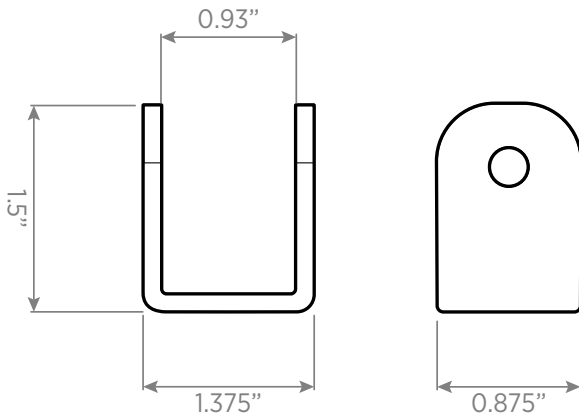
- Installs onto a Telescoping Camera Pole\*
- Features threaded M8-1.25 hole on end
- Includes Mounting Hardware

*\*Telescoping Camera Pole Sold Separately*

GENERAL	
Material	Tiga Steel
Dimensions (W x H x D) w/ VESA Plates Attached	1.375" x 1.5" x 0.875" 35mm x 38mm x 22mm
Weight	0.1lbs / 0.045kg

CAMERA POLE COMPATIBILITY	
CE-CP3W	Adjustable from 1' 3" to 2' 7" - White
CE-CP3B	Adjustable from 1' 3" to 2' 7" - Black
CE-CP6W	Adjustable from 3' to 5' 9" - White
CE-CP6B	Adjustable from 3' to 5' 9" - Black
CE-CP12W	Adjustable from 6' 2" to 11' 9" - White
CE-CP12B	Adjustable from 6' 2" to 11' 9" - Black

### DIMENSIONS:



M8-1.25