

CE-CG2x2CAM Install Guide



Maximum Load Capacity: 10lbs/4.5kgs



Capacité de charge maximale: 10 kg (4.5 lbs).

CAUTION: This Ceiling Mount is intended for use only with the maximum weights indicated. Use with products heavier than the maximum weights indicated may result in collapse of the Ceiling Mount and its accessories causing possible injury.

ATTENTION: Ce support plafond est prévu à être utilisé avec le poids maximum indiqué. À utiliser avec des produit plus lourds que le poids maximal indiqué peut entraîner l'effondrement de le support et ses accessoires et de blessures éventuelles.

THE INSTALLATION OF THIS CEILING MOUNT IS TO BE PERFORMED BY A QUALIFIED INSTALLER WHO IS FAMILIAR WITH LOCAL BUILDING CODES FOR ATTACHING DEVICES TO THE STRUCTURAL CEILING MEMBERS.

The Ceiling Tile is not intended to be supported by the suspended ceiling grid to which it is mounted to. Under NO circumstances should the Safety Wires be attached to Electrical Conduit, Gas or Water Piping.

The installer of these products must verify that the mounting surface, ceiling or wall, will safely support the combined weight of all attached equipment and hardware. Clinton Electronics will not be held liable for the improper use or installation of its products.

Included Items:

- 2'x2' Ceiling Tile x1
- 1-3/16" Double Set Screw Collar x1
- Plastic Shims x2
- Turnbuckles x4
- Spool Annealed Safety Wire x1
- T-Bar Clips x2
- 5mm Allen Wrench x1

Required Items:

- 7/16" Wrench or Socket
- Wire Cutters

Optional Items: (not included)

- 3/16" Dia. Eye Bolt x 4 (Steel Truss/Beam Mounting)
- 3/16" Dia. Eye Screw x 4 (Wood Truss/Stud Mounting)
- 3/16" Dia. Tie Wire Concrete Anchors x 4 (Concrete Ceiling Mounting)
ex: Red Head #TD4-112 Redi-Drive

1. Install Ceiling Tile

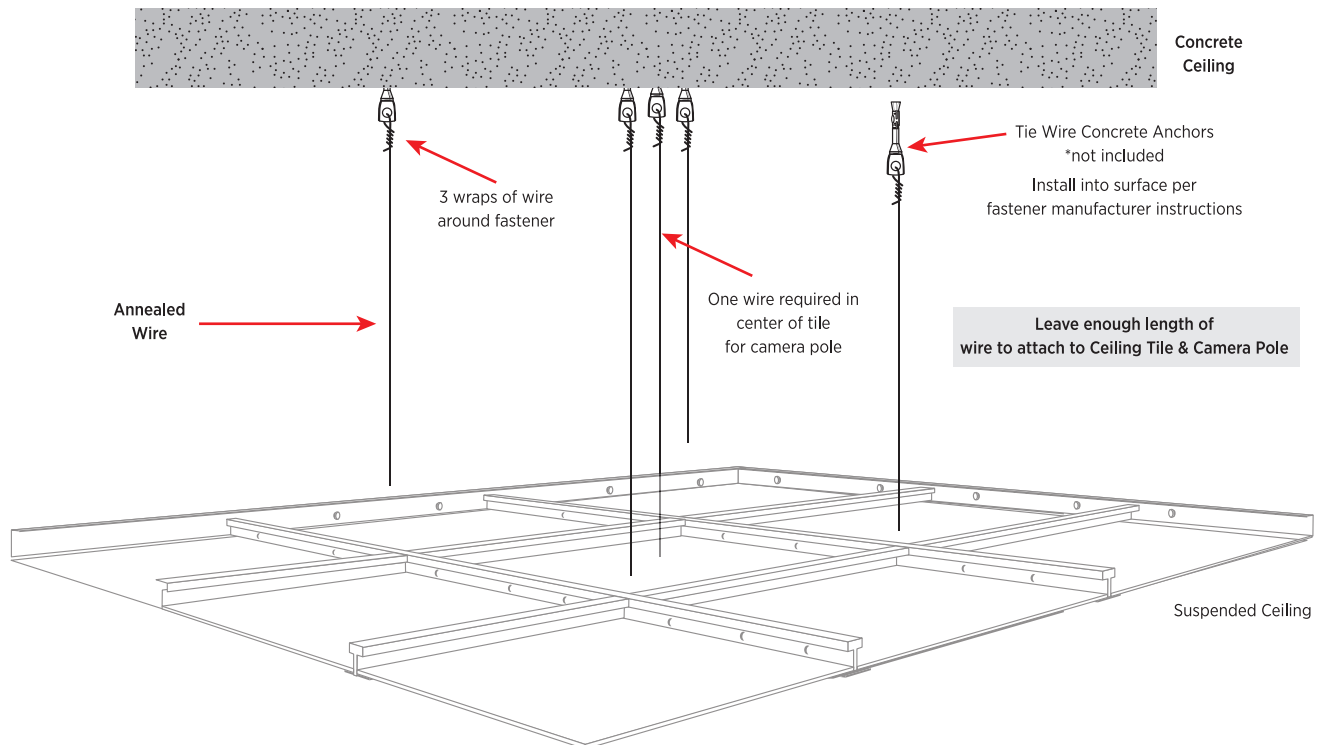
1.1 Locate five (5) attachment points in a permanent structure above the suspended ceiling; trusses, beams, studs or concrete ceiling, where Safety Wire can be attached to. One wire is required for each corner of the Ceiling Tile, and one is required to attach to the top end of the Camera Pole.

For Steel Trusses or Beams, secure a 1/4" dia minimum eye bolt (National Hardware #2160, available at Home Centers) to the structure by drilling a clearance hole through the truss or beam.

For Concrete ceilings, attach with Tie Wire Concrete Anchors (ITW-Redhead #TD4-112 Redi-Drive, or ITW-Redhead 1/4" x 1-1/2" Redi-Drive Tie Wire Anchors available at Home Centers). Anchors must be rated a minimum of 200 pounds in tension.

For Wood Truss/stud ceilings, use a 1/4" dia Screw Eye (National Hardware #2150, available at Home Centers) with a minimum penetration into the wood of 1". A 1/8" Pilot Hole is recommended to avoid splitting the wood.

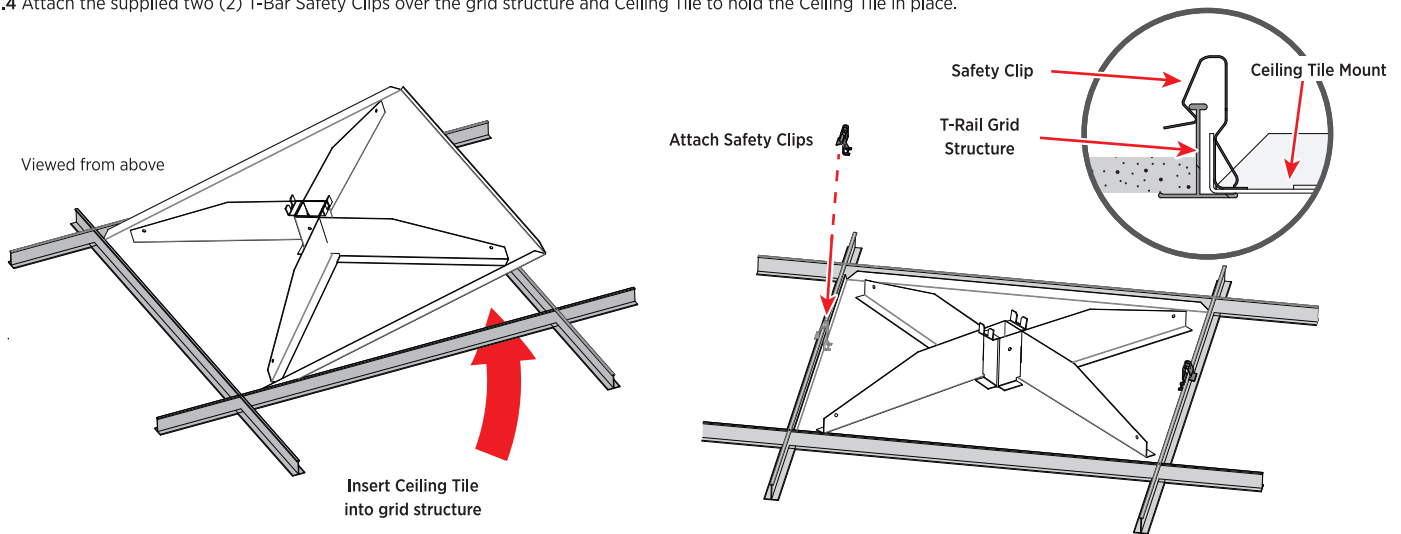
1.2 Attach the Annealed Wire to the Anchor with a minimum of three (3) wraps around each fastener.



1. Install Ceiling Tile - Continued

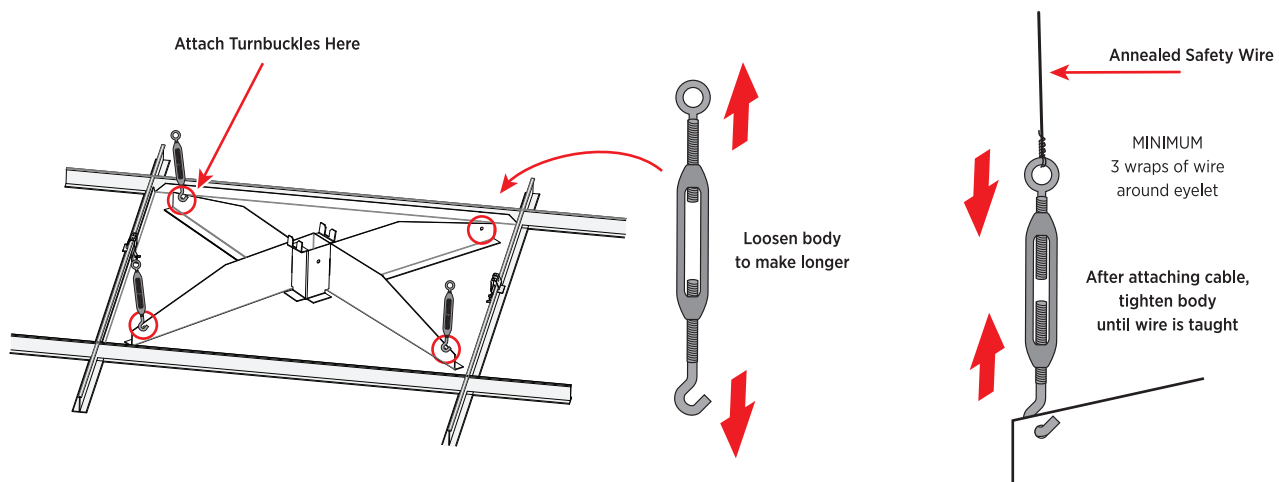
1.3 Position the Ceiling Tile in the desired location of the suspended grid structure. If installing in a 2ft x 4ft tile space, an additional cross tee (not included) must be used to fully support the tile on all four sides.

1.4 Attach the supplied two (2) T-Bar Safety Clips over the grid structure and Ceiling Tile to hold the Ceiling Tile in place.



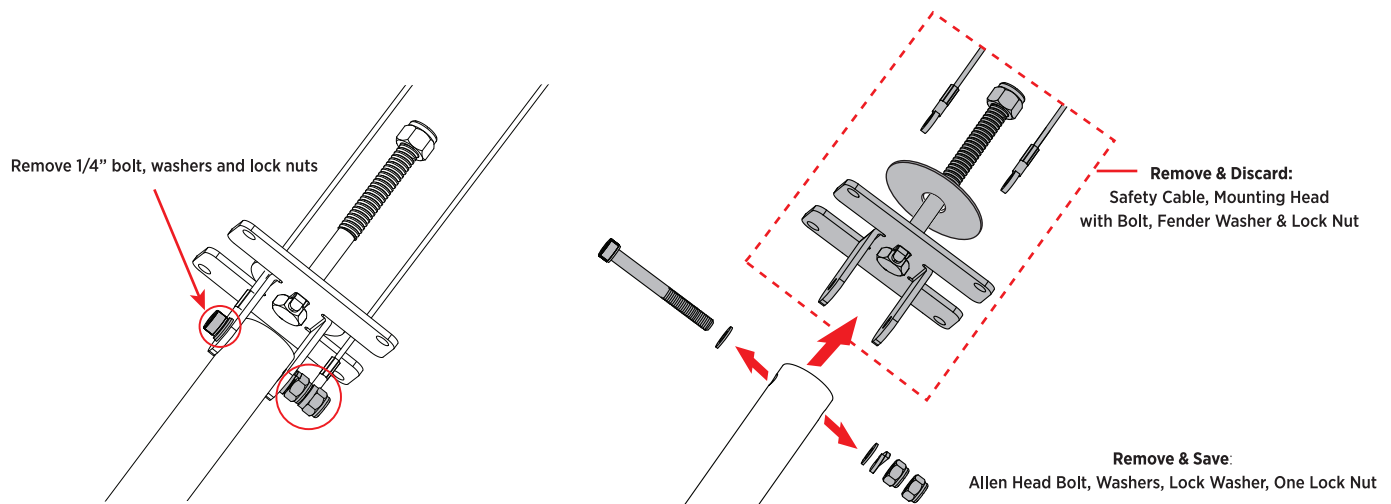
1.5 A hole is located in each corner of the gusset of the 2x2 tile. Insert the (4) turnbuckles into these holes and twist the body to open (lengthen) them. Secure the wire installed in **Step 1.1** to the eyelet of the (4) turnbuckles. Tighten (shorten) the turnbuckles by twisting the body until the wire is taught and the weight of the Mount and contents are fully supported by the Annealed Safety Wire and not the Ceiling T-Bar Grid. Re-tension if necessary after assembly is complete.

THE WEIGHT OF THE CEILING TILE MOUNT AND MONITOR SHOULD BE SUPPORTED BY THE FOUR (4) ANNEALED SAFETY WIRES, NOT THE SUSPENDED GRID STRUCTURE.



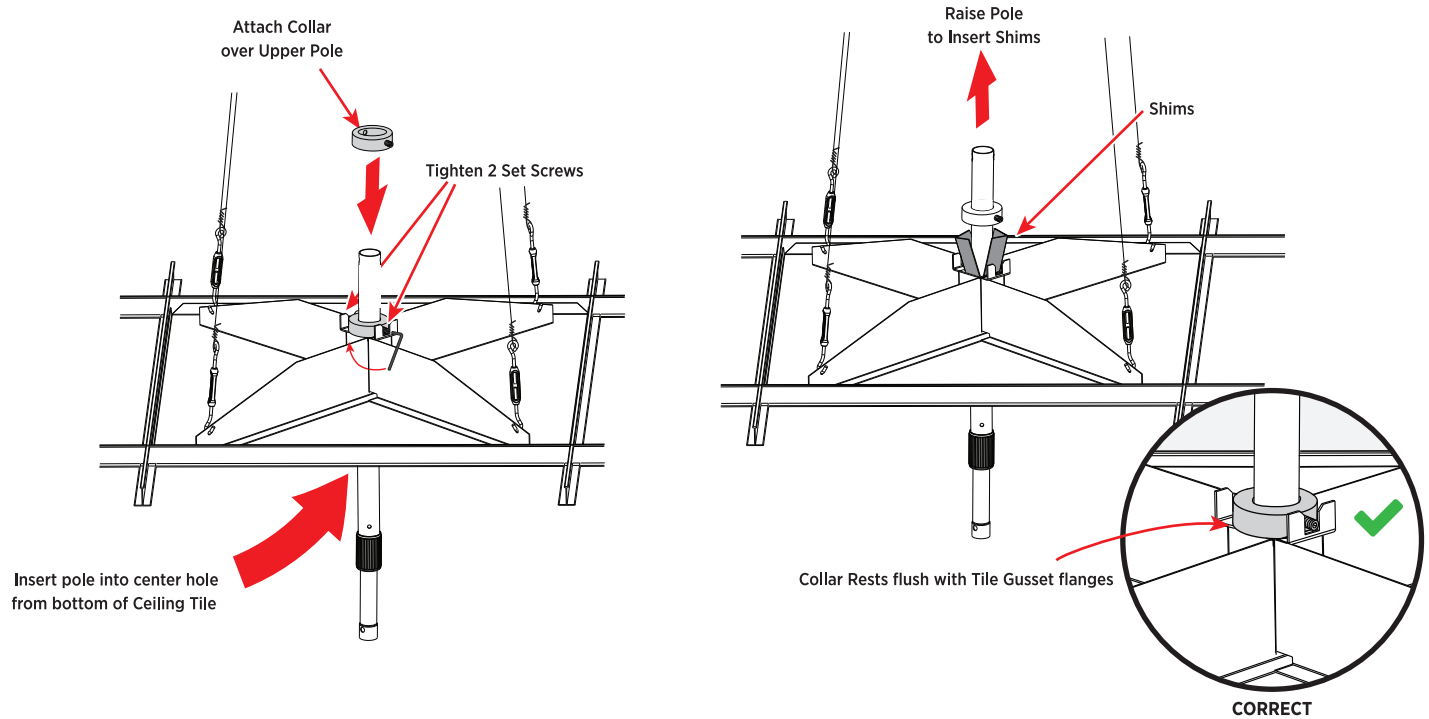
2. Separate the Pole from the Mounting Head

2.1 Remove the 1/4" Allen head bolt from the upper mounting head using a 5mm Allen wrench and 7/16" wrench. Discard the Safety Cable, and the Mounting Head with the bolt, fender washer, and lock nut. Save the Allen Head Bolt, Washers, Lock Washer, and Lock Nut for use in the next step.



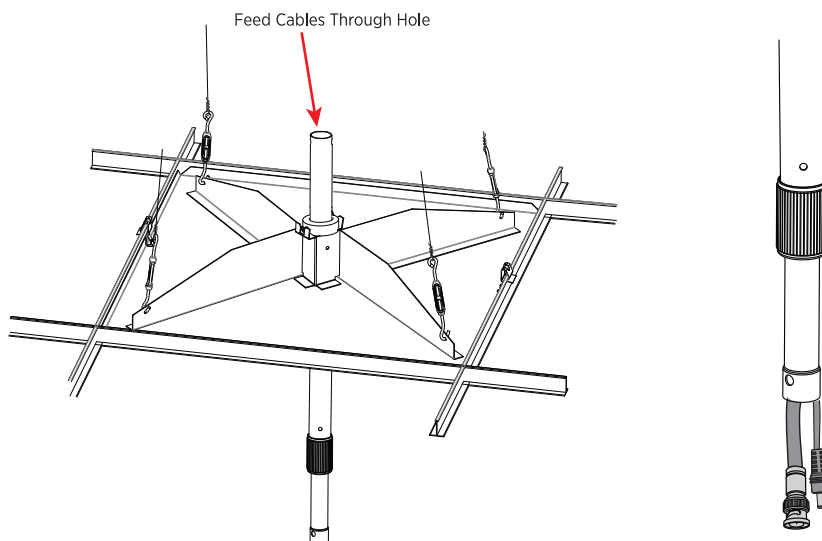
3. Install Telescopic Pole to Ceiling Tile

- 3.1. Insert the upper end of the telescoping pole (larger diameter pole) up through the center hole in the bottom of the ceiling tile.
- 3.2. Install the collar over the pole from above the ceiling tile and using the included 5mm Allen wrench, tighten the two Allen set screws on the collar to achieve the desired height of the pole below the ceiling tile.
- 3.3 Pull the pole upward enough to insert the two plastic shims between the pole and gussets in the ceiling tile. With the shims inserted, lower the pole back into position. The collar should rest flush on the top of the ceiling tile gusset flanges.



4. Run Cables

- 4.1 Feed Power and Video cables through the top of the Telescoping Pole, and down through the bottom.



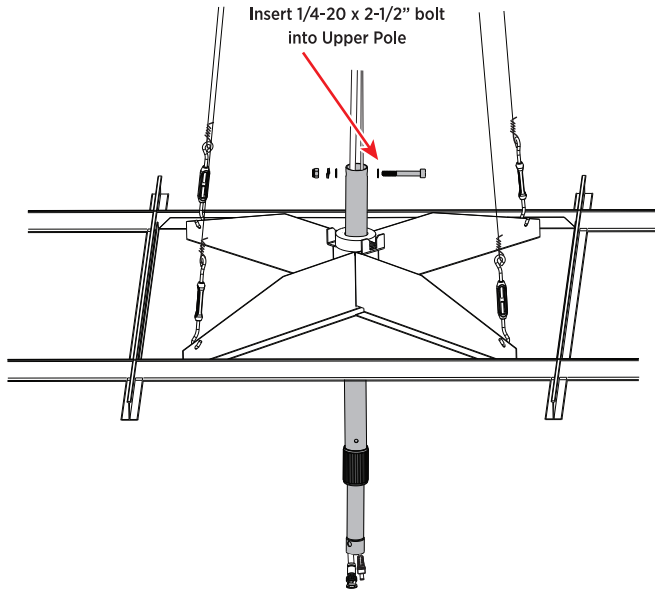
5. Install Safety Wire to Camera Pole

5.1 Insert the Allen Head bolt previously removed from the telescopic pole assembly in Step 2.1 into the hole near the top of the pole. Attach washers, lock washer and lock nut as shown below, and tighten with 5mm Allen wrench and 7/16" wrench. Leave bolt loose enough to attach Annealed Safety Wire in next step.

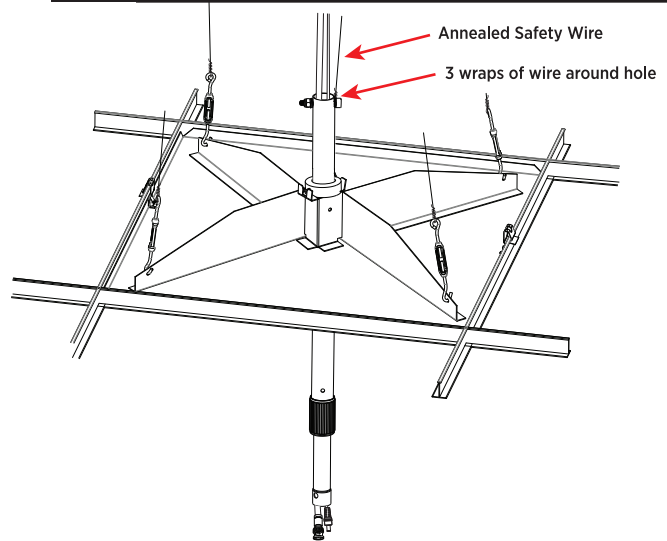
5.2 Using the center Annealed Safety Wire ran in step 1, wrap the wire around the top bolt with a minimum of three (3) wraps around the bolt.



THIS BOLT ACTS AS A SAFETY FEATURE IN THE EVENT THE COLLAR SHOULD SLIP ON THE POLE. THIS BOLT MUST BE INSTALLED.



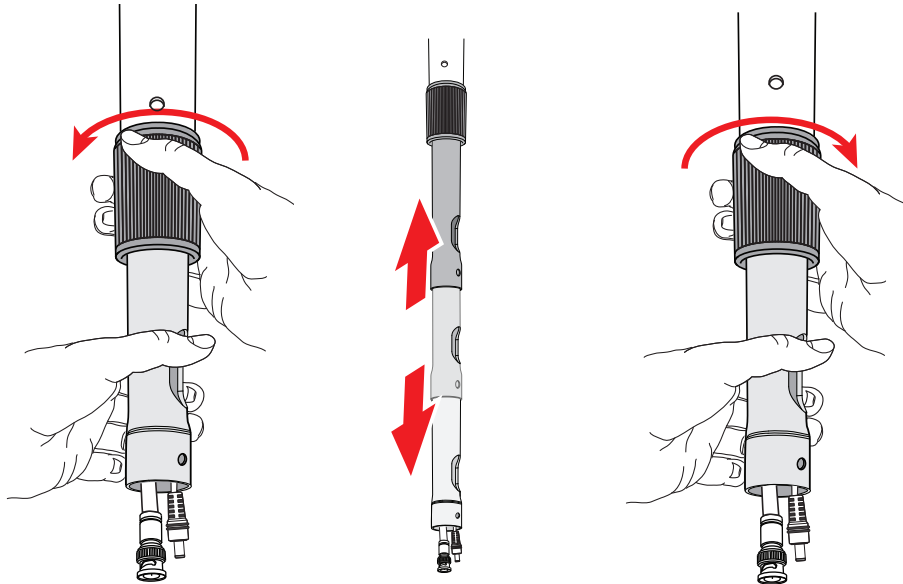
THIS ANNEALED WIRE IS A SAFETY FEATURE DESIGNED TO PREVENT THE POLE AND CAMERA FROM FALLING AND CAUSING INJURIES TO PERSONNEL OR PROPERTY BELOW THE ASSEMBLY, SHOULD SOME PART OF THE CEILING MOUNT'S STRUCTURE FAIL.



6. Adjust Pole Length & Attach Camera

6.1 While supporting the end of the inner pole, loosen the twist-lock collar by turning it counter-clockwise. Extend the pole by gently pulling it out to the desired length. Once the length of the pole has been adjusted, lock the pole in position by rotating the twist-lock collar clockwise by hand as snug as possible.

6.2 Connect wires to camera and mount camera to the end of the pole as detailed by your camera's installation instructions.



Maximum Camera Pole Load Capacity: 10lbs/4.5kgs
USE WITH PRODUCTS HEAVIER THAN THE MAXIMUM WEIGHTS INDICATED MAY RESULT IN COLLAPSE OF THE CEILING MOUNT AND ITS ACCESSORIES CAUSING POSSIBLE INJURY.