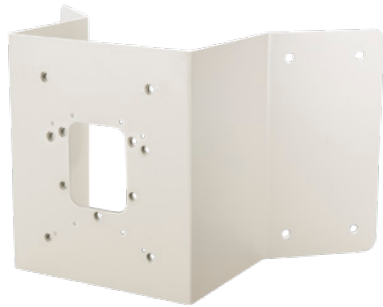
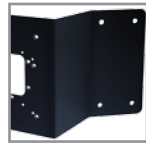


## CE-UCB-CRNR(B) Universal Corner Mount Adapter



CE-UCB-CRNR  
(White)  
<<<

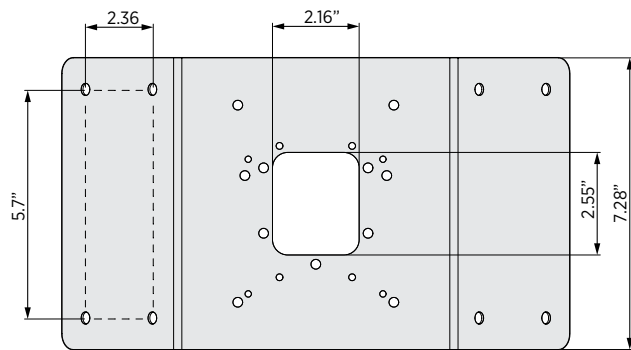
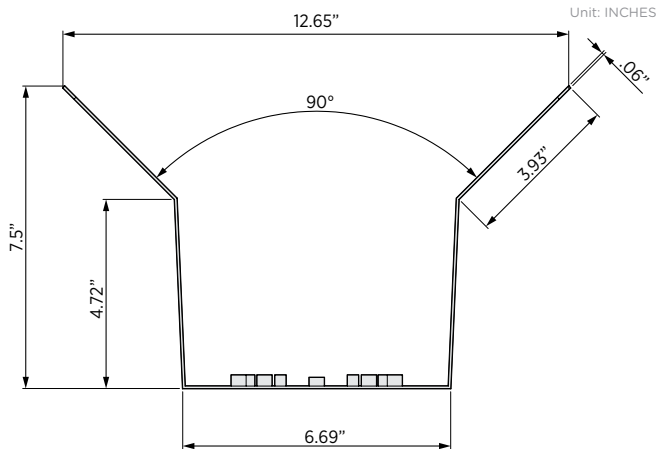


CE-UCB-CRNRB  
(Black)

### INFO:

- Use in conjunction with a wall bracket and/or camera to mount to the corner of a building
- Powder coated Steel
- Stainless Steel fasteners included

### DIMENSIONS:



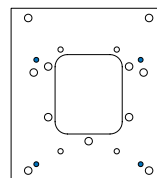
### SPECIFICATIONS:

Materials	Steel - Powder Coated
Dimensions	12.65" (W) x 7.28" (H) x 7.5" (D) 321mm (W) x 185mm (H) x 190mm
Weight	3.3 lbs / 1.49 kgs

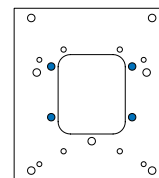
### MOUNTS TO:



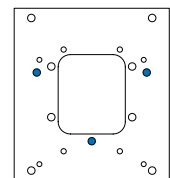
CE-VXWB



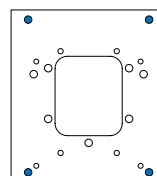
CE-H13



CE-PTZ10XHD



R Series PTZs



Double Gang

