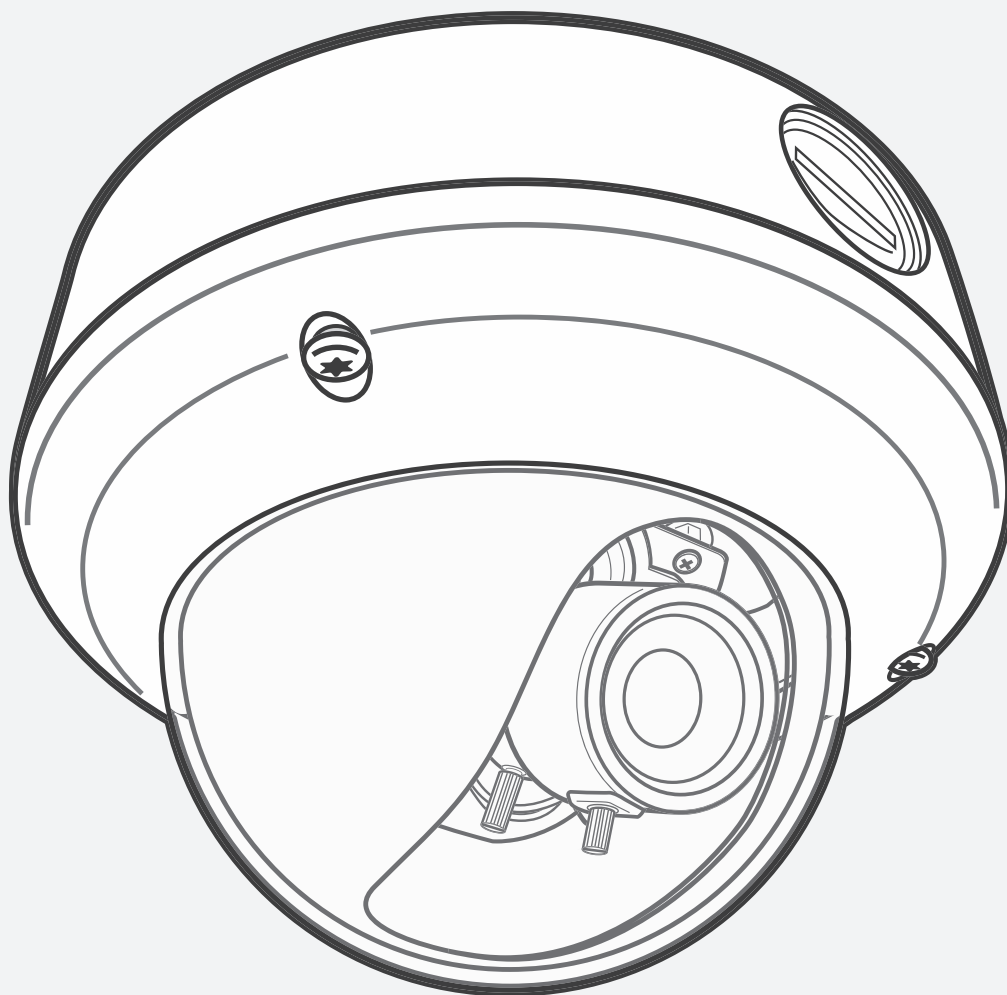


**clintonelectronics**

# CE-IPVX4 Quick Installation Guide



Actual product may vary slightly from the images shown in this manual.  
Clinton reserves the right, without notification, to make changes in product design & specification.

# CE-IPVX4 Quick Installation Guide

## Package Contents

<b>Camera</b>	<ul style="list-style-type: none"><li>• CE-IPVX4 Vandal X IP Outdoor True D/N Camera</li></ul>
<b>Quick Installation Guide</b>	<ul style="list-style-type: none"><li>• Brief product information and quick installation</li></ul>
<b>Software CD</b>	<ul style="list-style-type: none"><li>• Intelligent IP Installer</li><li>• User Manuals</li><li>• Language Packs</li></ul>
<b>Accessory</b>	<ul style="list-style-type: none"><li>• Screw pack for wall &amp; ceiling mounting (4 screws, 4 plastic wall anchors)</li><li>• T20 Torx Security Wrench</li><li>• CAT5 Female Coupler</li></ul>

### **Note:**

CAT5 cables are supplied by user. RJ45 Ethernet network connection (using CAT5 standard UTP or better quality cable) for Power over Ethernet (PoE 802.3af/at).

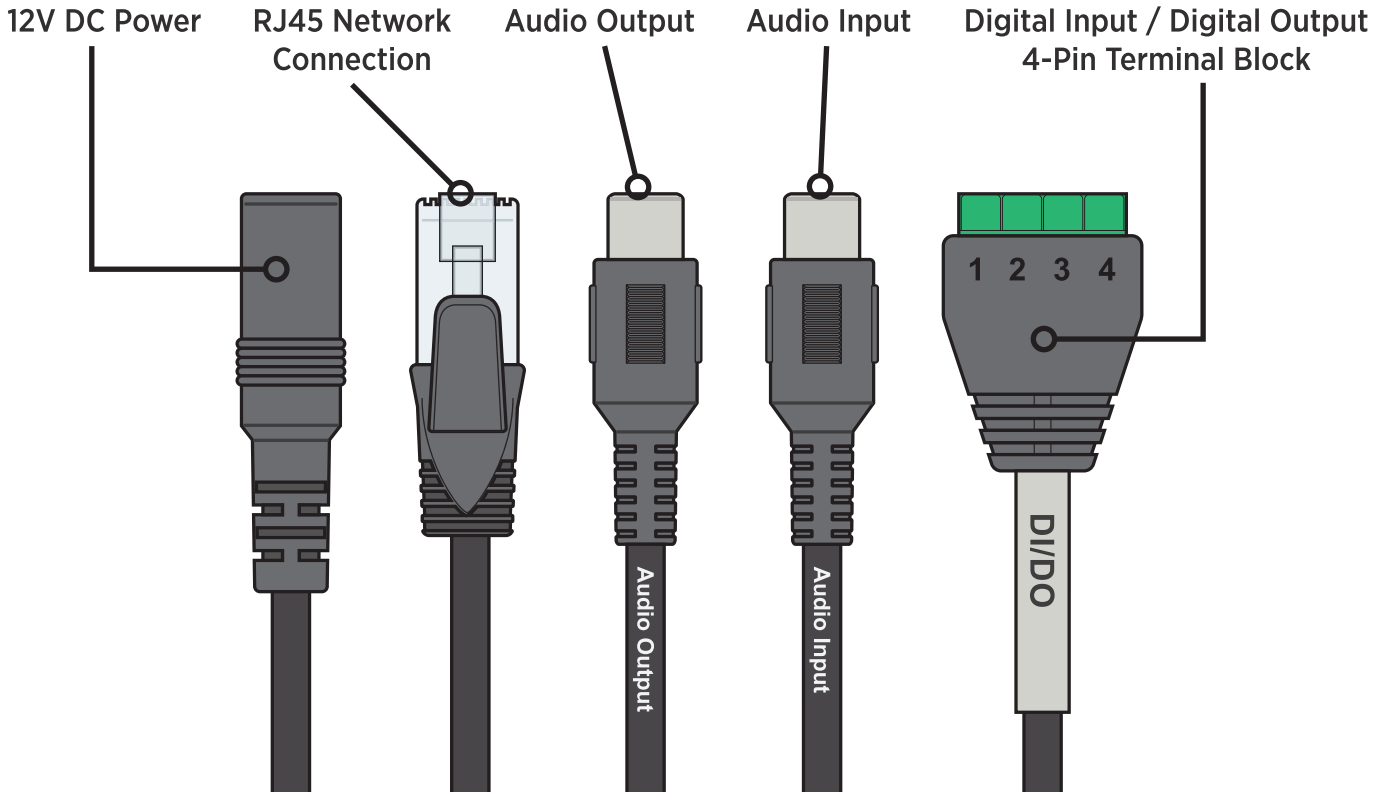
For normal operation and viewing of the network camera, it's recommended that your system meet these minimum requirements for proper operation:

Item	Minimum Requirements
CPU	Pentium 4 2.8GHz (or equivalent AMD)
Graphics Card	256MB RAM graphics card (or equivalent on-board graphics card)
RAM	Minimum 1 GB of RAM, (2GB or above is recommended)
Operating System	Windows 2000, 2003, XP, Vista, 7, 8 or 10. Mac OS Leopard 10.5
Web Browser	Internet Explorer 8 or later

### **Note:**

1. If using Windows 98 or Windows ME, please install IP Installer before using Web Viewer to ensure the system runs normally.
2. If not able to view the recorded video file, please install Xvid codec. (For Windows 98, ME or 2000 server, the codec might not work properly. Please download Xvid codec 1.0 from the internet.)
3. Please keep updating the latest Windows software and service package. (Ex: Net Framework, Windows Media Player, Enhance ActiveX Security).
4. Web Viewer controls are limited on Safari, Google Chrome & Firefox.
5. IP Installer Software does not currently work on MAC computers.

# CE-IPVX4 Connections

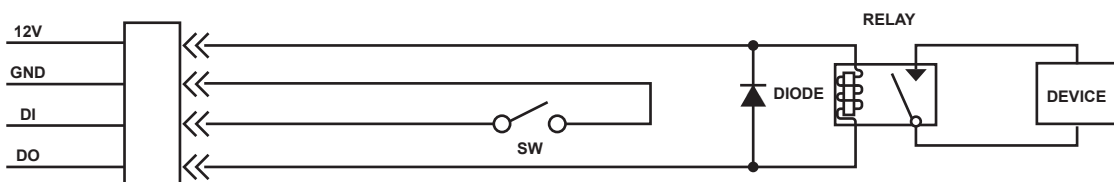


**AUDIO OUTPUT:** Connect external speaker to play audio from PC/monitoring end.

**AUDIO INPUT:** Connect external microphone to listen to audio from camera area.

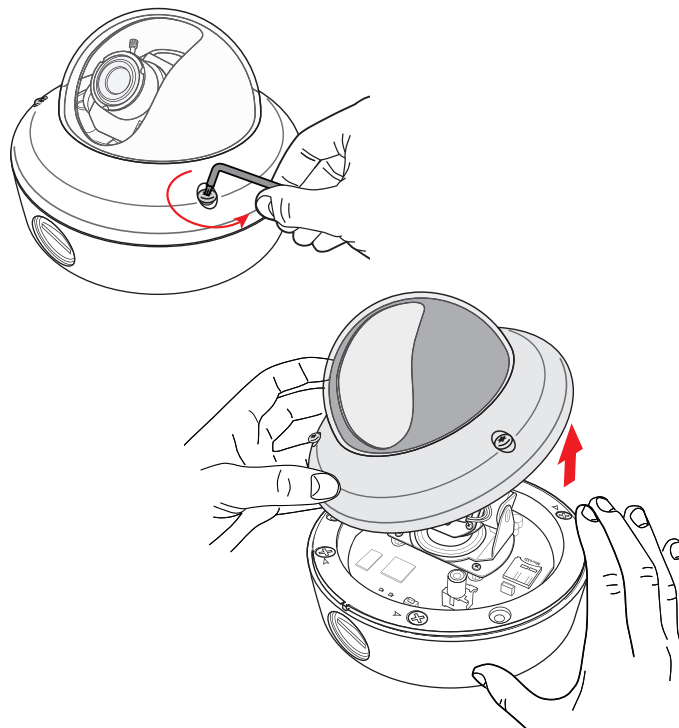
**DI / DO Terminal Block Pin Definition**

PIN	Definition	Description	Max. V/A
1	12V DC	Power (+)	12V DC / 1.2W
2	Ground	Power (-)	
3	Digital Input	Connected to GND to activate, or leave floating (or unconnected) to deactivate.	30V DC
4	Digital Output	Uses an NPN transistor with the emitter connected to the GND pin. If used with an external relay, a diode must be connected in parallel with the load for protection against voltage transients.	24V / 100mA

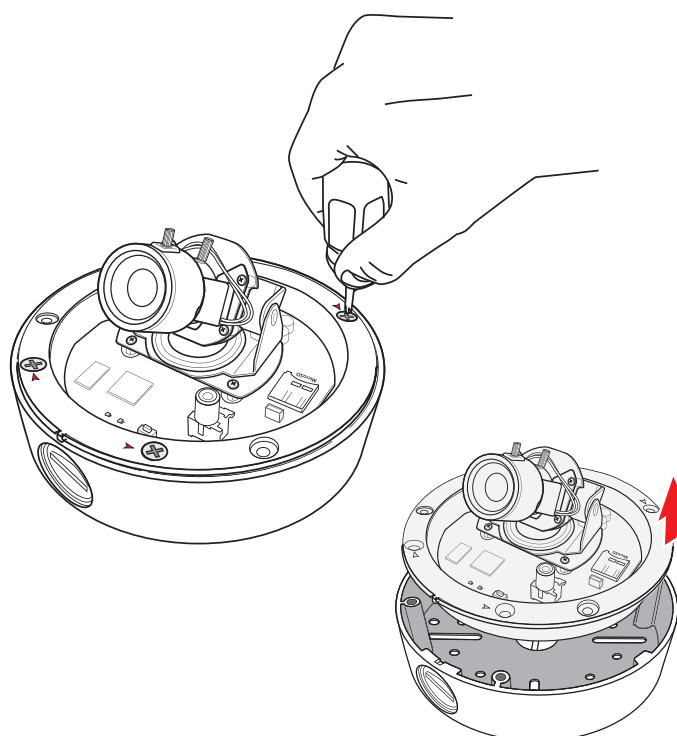


# CE-IPVX4 Quick Installation Guide

- 1 Remove Dome Cover:** Use the supplied T20 Torx wrench to loosen the 3 Torx screws that hold the dome assembly onto the base. Remove the top dome cover from the camera base and set aside.

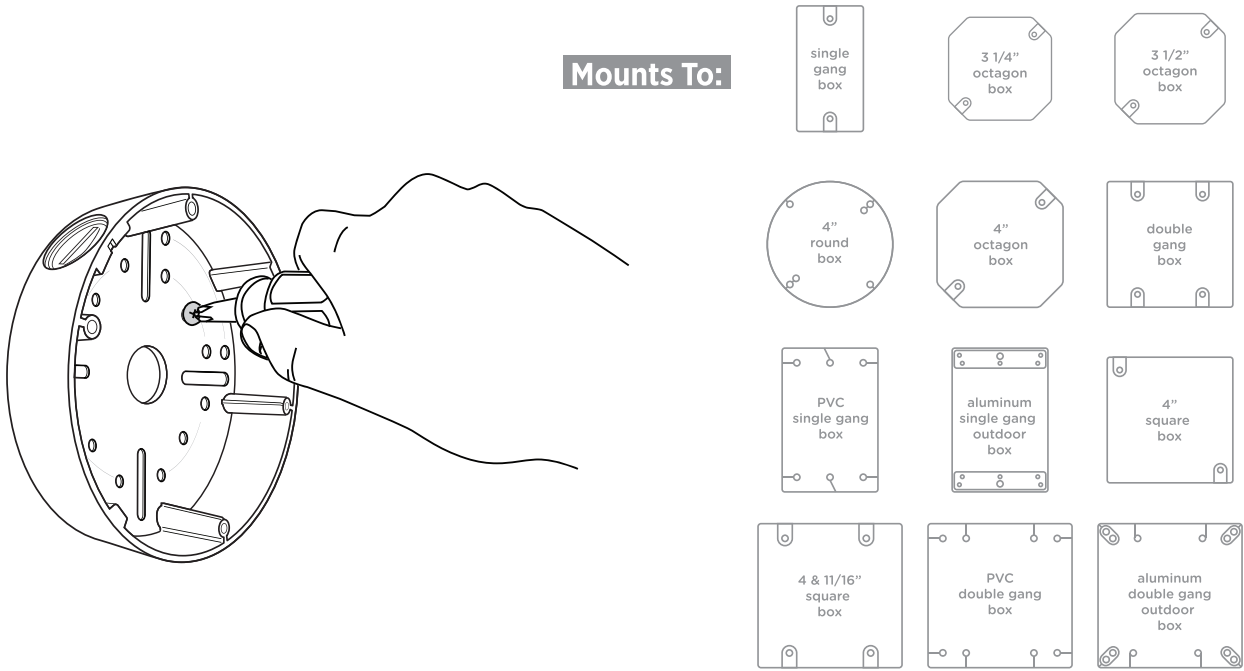


- 2 Remove Inner Camera Assembly:** Remove the four Phillips head screws that hold the inner case onto the camera base, then remove the inner camera assembly from the camera base.



# CE-IPVX4 Quick Installation Guide

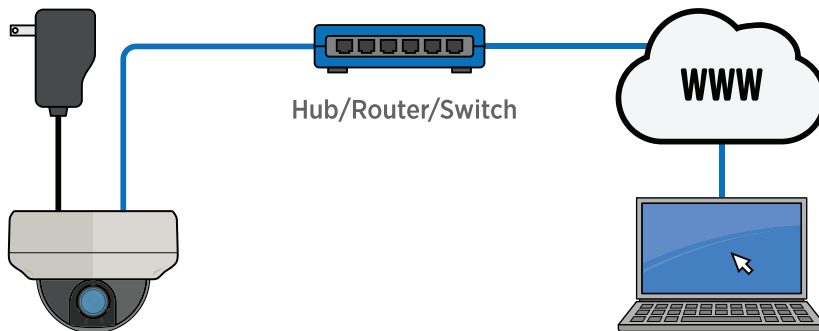
- 3 Mount Outer Case:** If mounting to solid surface, use the four Phillips head mounting screws & drywall anchors if necessary, or other appropriate fastener (sheet metal screws, masonry screws/bolts, etc.)  
If mounting to a conduit box, choose the mounting hole pattern that best suits your application and use the appropriate screws. Multiple mounting hole patterns are provided.



- 4 Attach Cables & Power Supply:** The camera can be powered either with an optional 12 Volt DC power supply or with a PoE supported Hub/Router/Switch.

## 12vDC

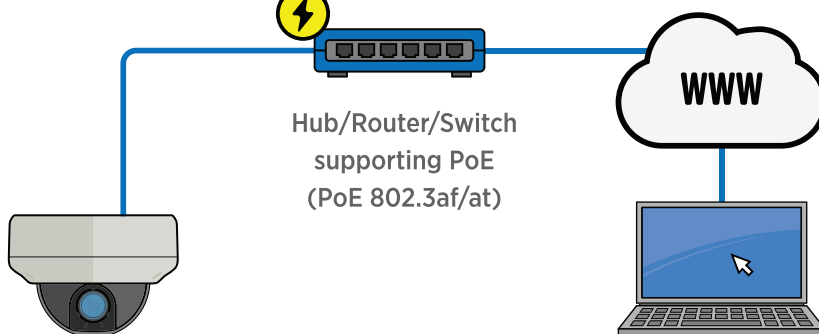
12vDC (1A)  
Power Supply



## PoE

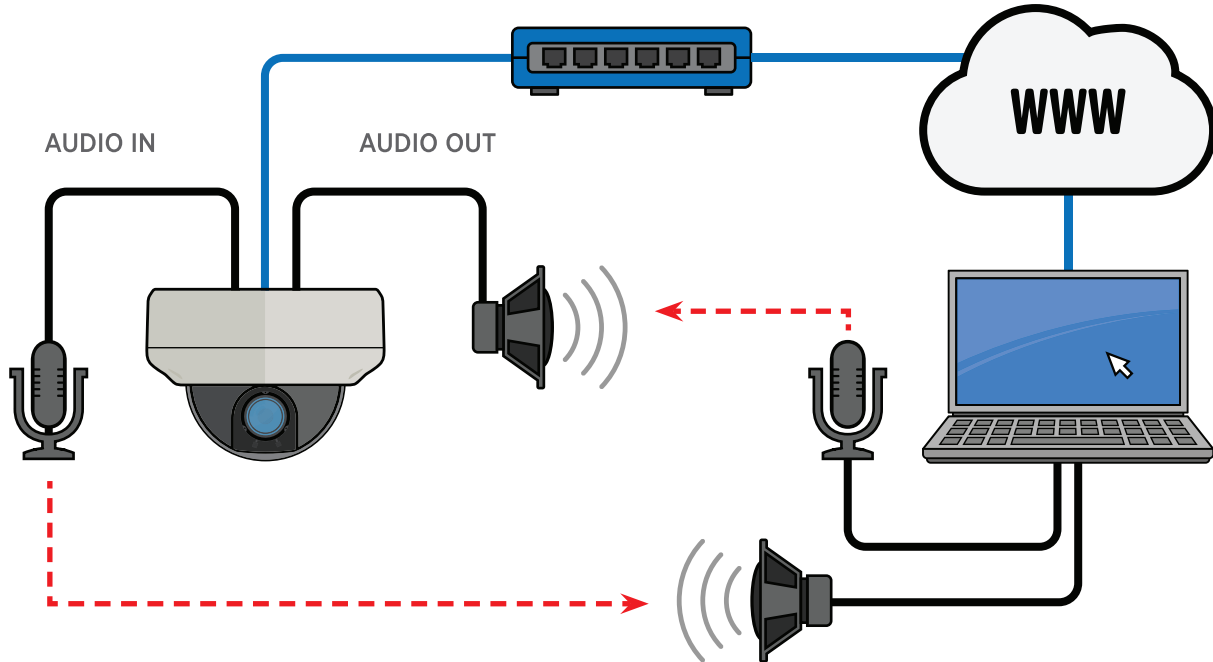


Hub/Router/Switch  
supporting PoE  
(PoE 802.3af/at)



# CE-IPVX4 Quick Installation Guide

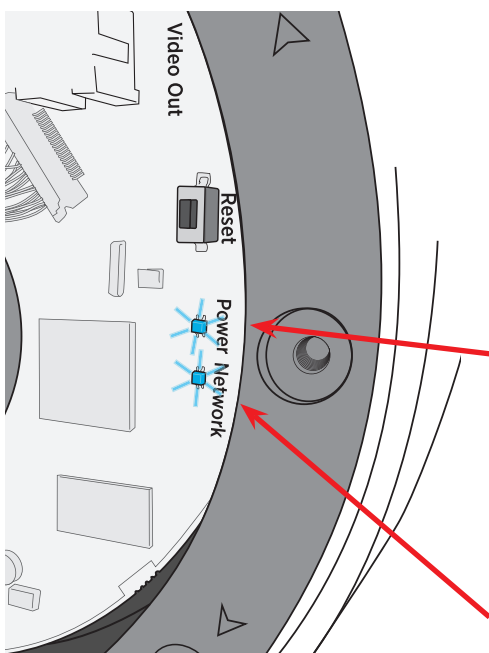
- 5 Attach Cables & Power Supply (continued):** Make any desired audio connections using the Audio In/ Audio Out cables. Microphone & Speaker(s) sold separately.



**AUDIO OUTPUT:** Connect external speaker to play audio from PC/monitoring end.

**AUDIO INPUT:** Connect external microphone to listen to audio from camera area.

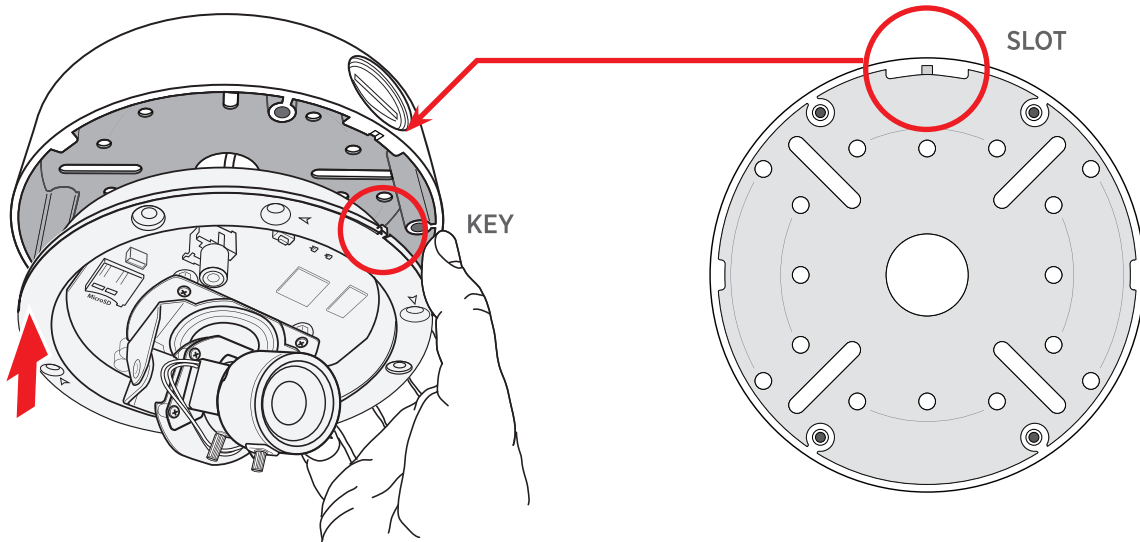
- 6 LEDs:** After the camera is connected to a power source and an ethernet connection is made, the 2 LEDs on the circuit board will illuminate.



LED Indicator Definition		
LED	Color	Indication
Power	Red	Steady red for booting up process; Steady red for 30 Seconds when WPS configure has failed
	Blue	Steady blue for booting up completion
	Purple	Flashes purple during firmware upgrade; when reset button is pressed for at least 5 sec. to factory default
	Off	When you press reset button; or Power off
Network	Blue	Flashes blue when there is network activity

# CE-IPVX4 Quick Installation Guide

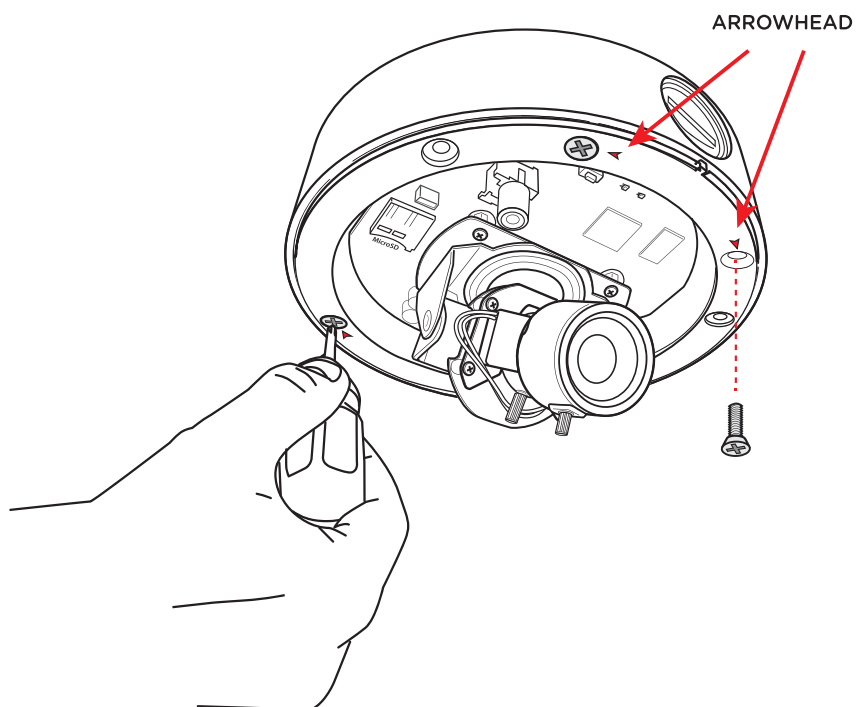
- 7 Replace Inner Camera Assembly:** After power/video connections are made and any extra cable is concealed in mounting surface; replace the inner camera assembly into the mounting base as shown below. Align the key on the lip of the inner camera assembly with the slot on the camera base when reassembling.



**Note:**

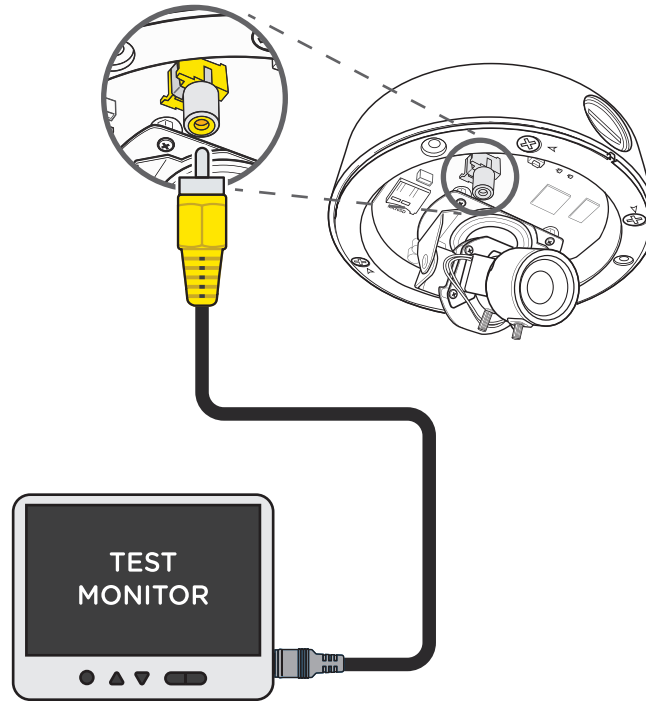
If key & slot are not aligned properly the weather resistant seal will be comprised, allowing water to leak into the camera.

- 8 Attach Camera Assembly to Outer Case:** Replace the four Phillips head screws that hold the inner camera assembly to the outer case. The four holes are marked with arrowheads.

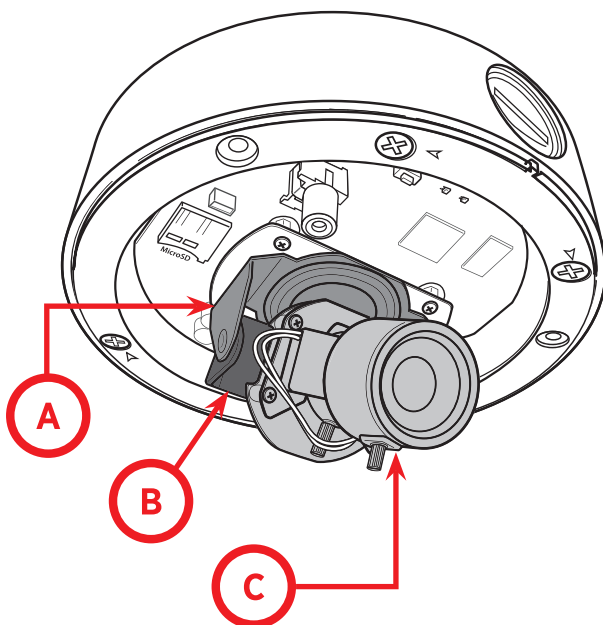


# CE-IPVX4 Quick Installation Guide

- 9 **Test Monitor Connection:** To view the camera image while making zoom/focus adjustments, connect an RCA video cable to the Video Out port on the camera's circuit board. This is an ANALOG video connection.



- 10 **Camera Adjustment:** Use the 3-Axis gimbal to adjust the camera viewing angle as necessary.



A. Turn left or right to adjust the pan of the camera.

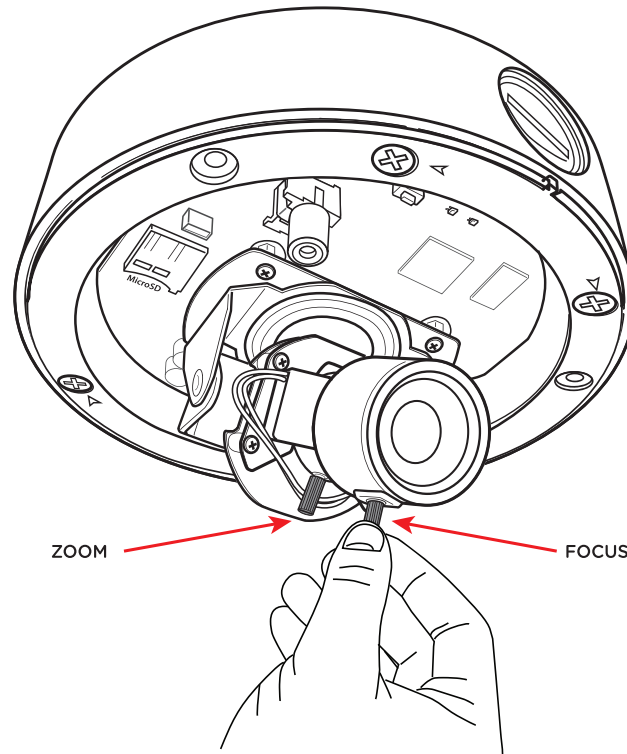
B. Turn up or down to adjust the tilt of the camera.

C. Rotate the lens module to adjust the orientation of the camera.

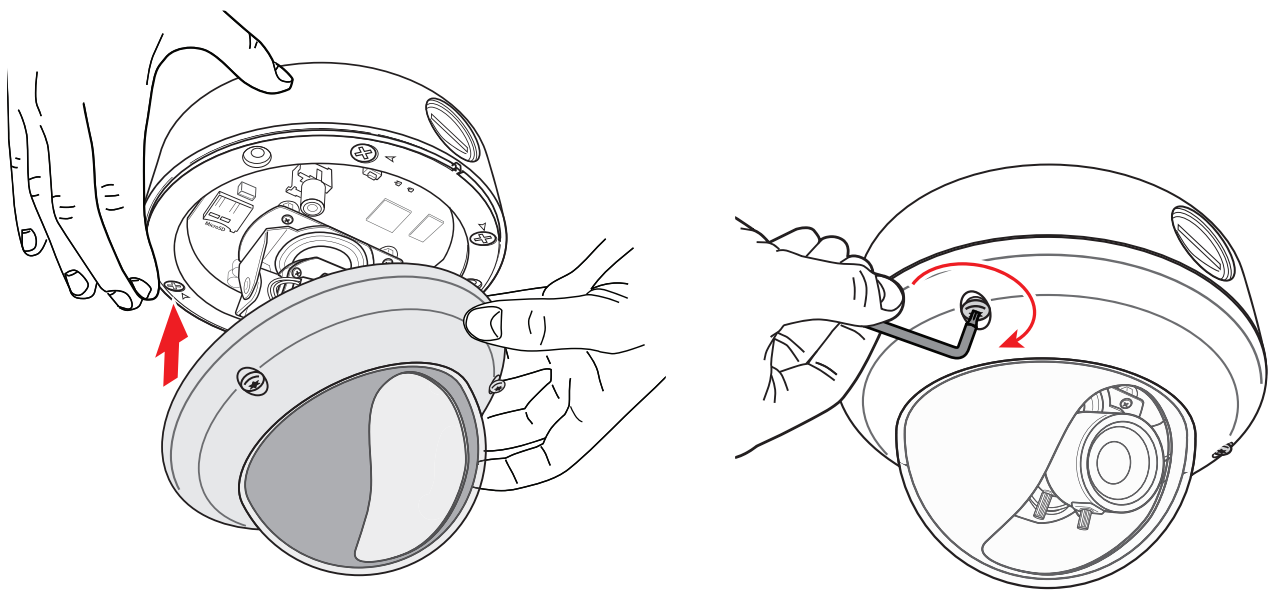


# CE-IPVX4 Quick Installation Guide

- 11 Zoom / Focus Adjustment:** Loosen the appropriate adjustment lever by turning counter-clockwise. To widen or narrow the viewing angle rotate the ZOOM lever to the Left or Right. Rotate the Focus lever Left or Right to focus the lens.



- 12 Final Assembly:** After image adjustments have been made, carefully install the dome cover onto the camera base. Then using the supplied Torx wrench, tighten the 3 Torx screws that hold the dome cover onto the base. Make sure each screw is tight to ensure superior weather resistance.



**Note:**

If torx screws aren't fully tightened the weather resistant seal will be comprised, allowing water to leak into the camera.

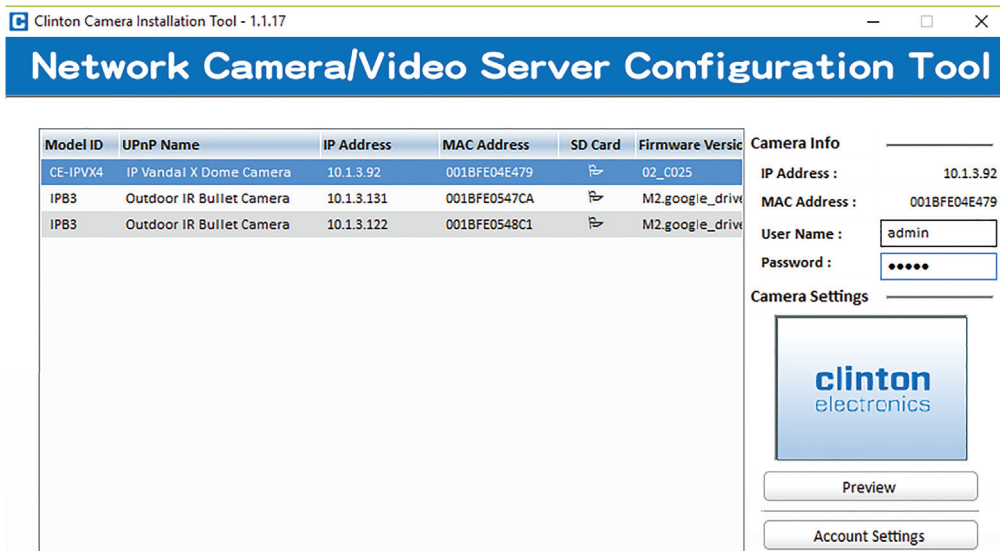
# IP Installer Software - Windows PC

- 1 Install Software:** After the camera has been installed, insert the CD-ROM into a Windows PC. The setup page will show up automatically. Select "Intelligent IP Installer" and follow the installation process to complete the installation.



For latest IP Installer software, visit the Support page on [www.clintonelectronics.com](http://www.clintonelectronics.com)

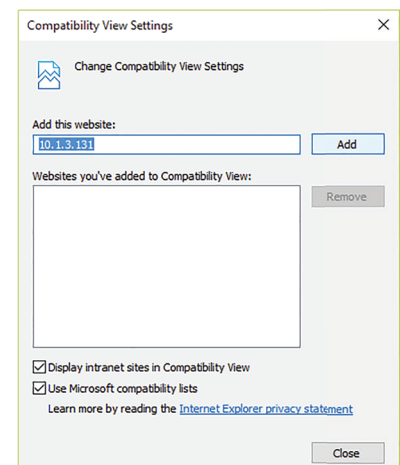
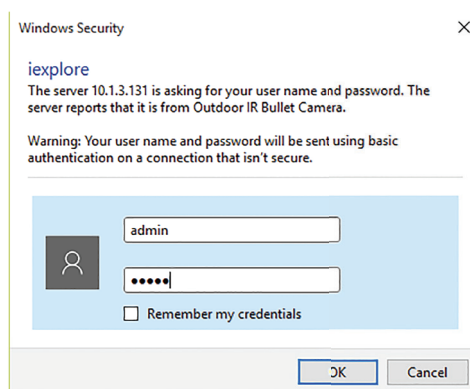
- 2 Click the Intelligent IP Installer Icon on your desktop.** The main page will show up listing all active camera and video server devices. Select the relevant IP camera from the list and double click to enter the camera User Interface. The default web browser for viewing is Internet Explorer.



- 3 Enter Username and Password to login to the IP Camera.** (Default is admin / admin). Then go to Settings/Compatibility View. Type in the camera's IP address and click ADD. Once the camera's IP address has been added to the Compatibility View list, click CLOSE.

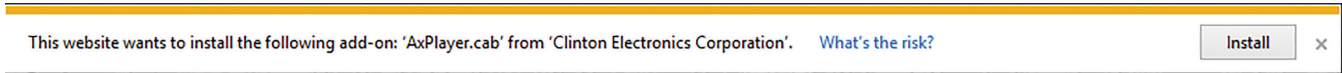
## Note:

Default Username: *admin*  
Default Password: *admin*



# IP Installer Software - Windows PC

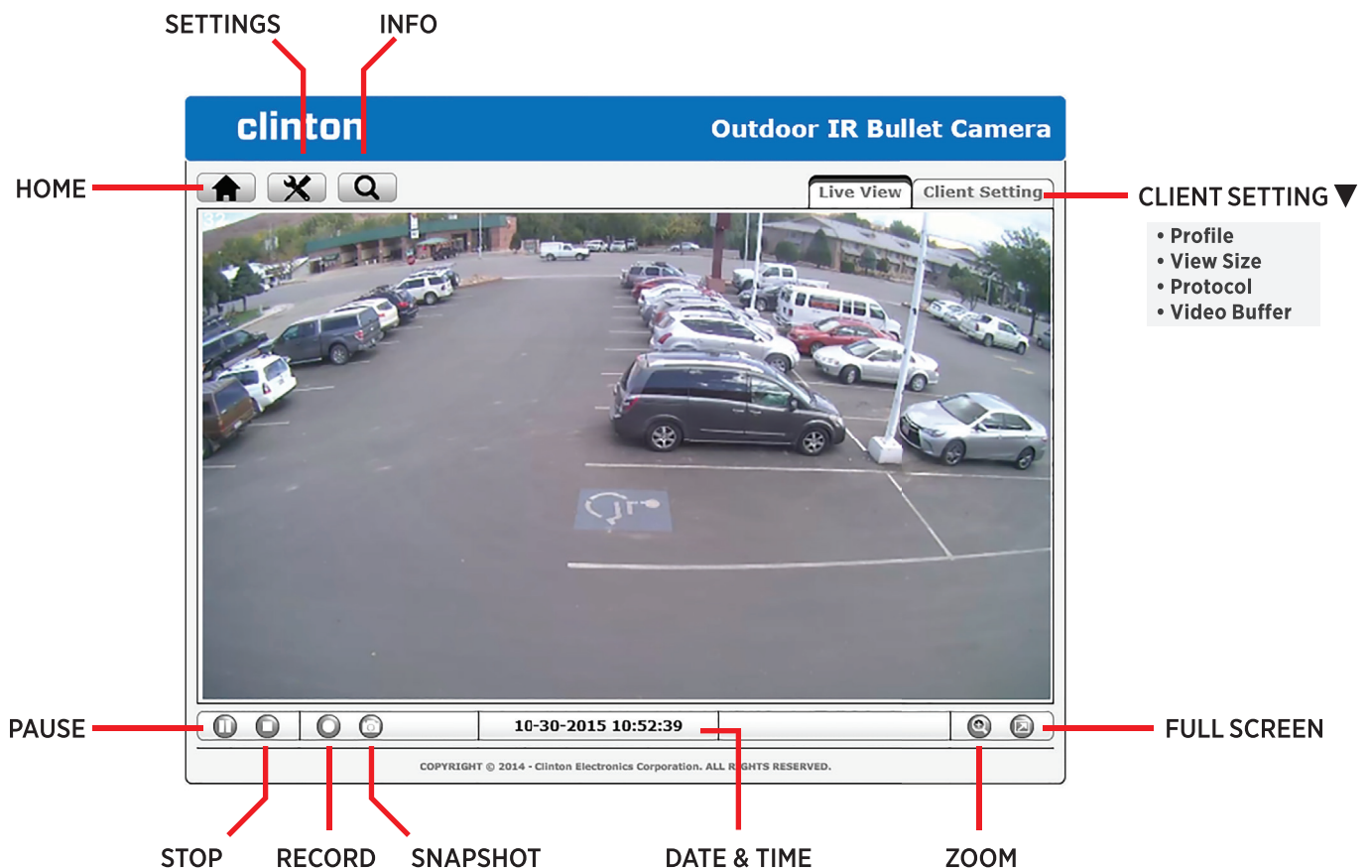
- 4 **ActiveX:** When accessing the IP Camera for the first time, a yellow information bar appears below the address bar: This website wants to install the following add-on: 'AxvideoView.cab' and/or 'AxPlayer.cab' from 'Clinton Electronics'. Click *Install*.



- 5 **Pop-Up:** Depending on Privacy settings, an information bar may appear alerting you about blocking a pop-up. Choose to always allow for the IP camera address.



- 6 **Live View:** After successfully logging into the camera, the live image from the camera displays in the center of the screen.



**Note:**

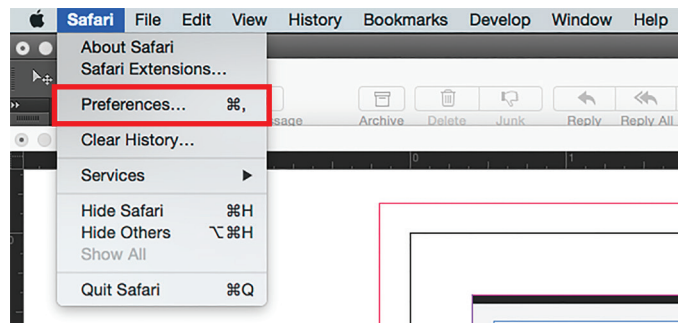
Google Chrome, Safari & Firefox do not support recorded video playback. Some options/controls may also be limited to these browsers.

# Web Viewer - MAC OSX + Safari

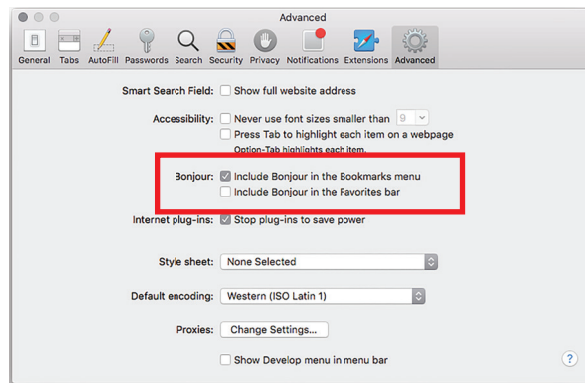
- 1 **Open the SAFARI browser.** For Web Viewer to properly function, Bonjour must be configured. The Bonjour function does not work on Google Chrome or Firefox.



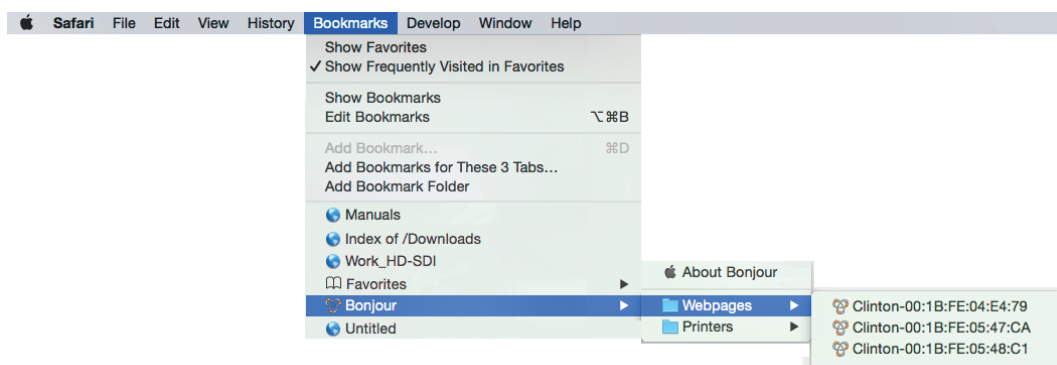
- 2 **Go to Preferences.** (click on Safari in the menu bar).



- 3 **Enable BONJOUR.** Click the Advanced tab (gear icon). Click the check box to *Include Bonjour in the Bookmarks menu.*

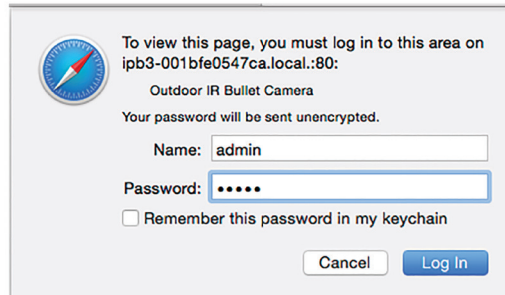


- 4 **Go to Bookmarks.** Scroll down to the Bonjour bookmark, then click on the IP camera you wish to connect to.



# Web Viewer - MAC OSX + Safari

5 Enter Name & Password. Login to the selected camera when prompted (Default is admin / admin)



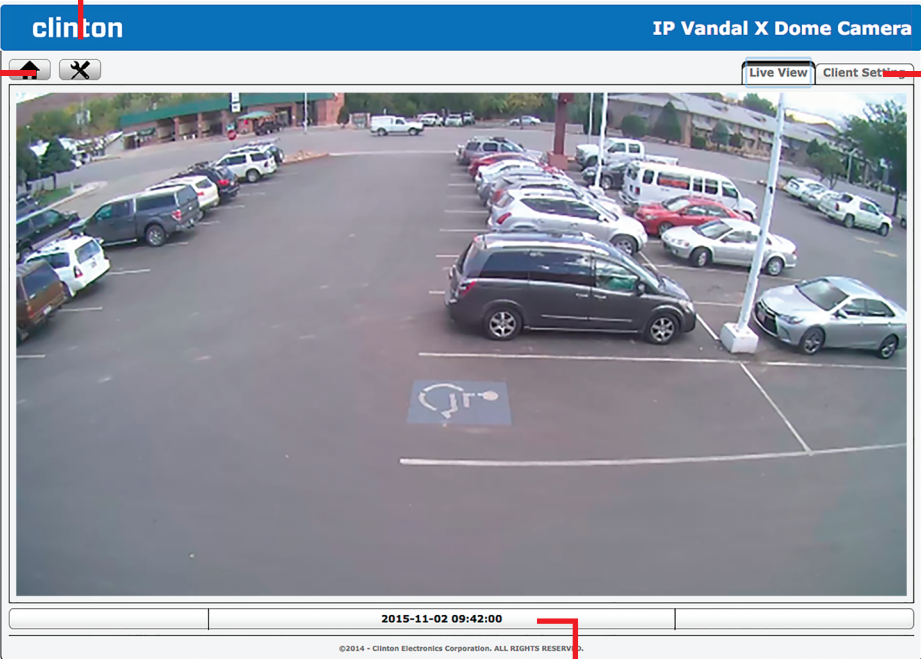
To view this page, you must log in to this area on ipb3-001bfe0547ca.local.:80:  
Outdoor IR Bullet Camera  
Your password will be sent unencrypted.

Name:

Password:

Remember this password in my keychain

6 Live View: After successfully logging in to the camera the live image from the camera displays in the center of the screen. Options are limited on the MAC (Safari) web viewer compared to PC (Internet Explorer).



SETTINGS

HOME

CLIENT SETTING ▼

- Profile
- Format
- View Size

DATE & TIME

2015-11-02 09:42:00

©2014 - Clinton Electronics Corporation. ALL RIGHTS RESERVED.

The screenshot shows a web browser window displaying a live video feed of a parking lot. The interface includes a blue header with the brand name 'clinton' and the camera model 'IP Vandal X Dome Camera'. On the left, there are 'HOME' and 'SETTINGS' buttons. On the right, there is a 'CLIENT SETTING' dropdown menu with options for Profile, Format, and View Size. At the bottom, a status bar displays the date and time '2015-11-02 09:42:00' and a copyright notice '©2014 - Clinton Electronics Corporation. ALL RIGHTS RESERVED.'.

**clintonelectronics**

# **CE-IPVX4 Quick Installation Guide**

**Clinton Electronics  
6701 Clinton Road  
Loves Park, IL 61111**

**Technical Support:  
1-800-549-6393  
Monday~Friday 8am~5pm (Central Standard Time)**

Actual product may vary slightly from the images shown in this manual.  
Clinton reserves the right, without notification, to make changes in product design & specification.

ver: 11.01.15