

IDX HD Series Install Guide

For EX-SDI 2.0 IDX Dome Cameras: IDX1HD(B) • IDX1HD(B)L • IDX1QHD(B)

Included Items:

- IDX Series Camera x 1
- Mounting Plate x 1
- 4x20mm Screws x 4
- Instructions x 1
- Test Monitor BNC Lead x 1
- Mounting Template x 1

Required Items:

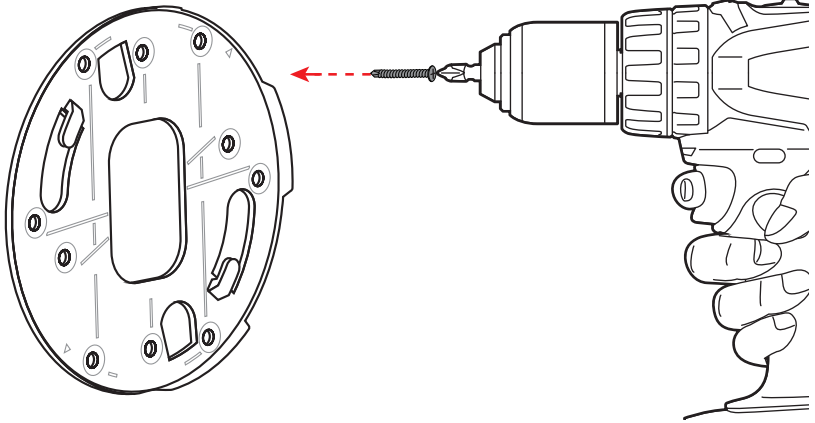
- Phillips Head Screwdriver or Drill with Phillips Head Bit
- DC12V or AC24V Power Supply

Optional Items:

- CE-REMOTE (OSD Remote Control)

1. INSTALL MOUNTING PLATE

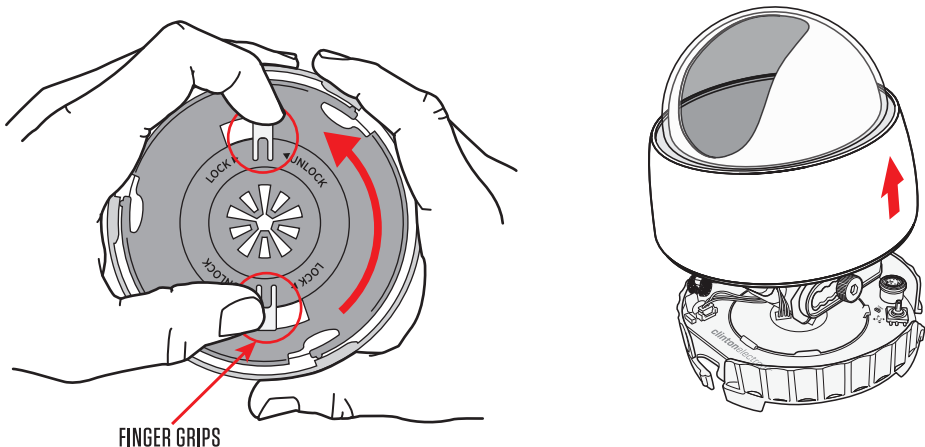
Secure the Mounting Plate to a compatible conduit box (Single Gang, Double Gang, 3-1/4" & 3-1/2", or 4" Oct/Rd) using the screws that came with the conduit box, or mount to a solid surface using the 4 screws included with this camera.



NOTE: It is recommended to use drywall anchors if mounting to drywall. Drywall anchors not included.

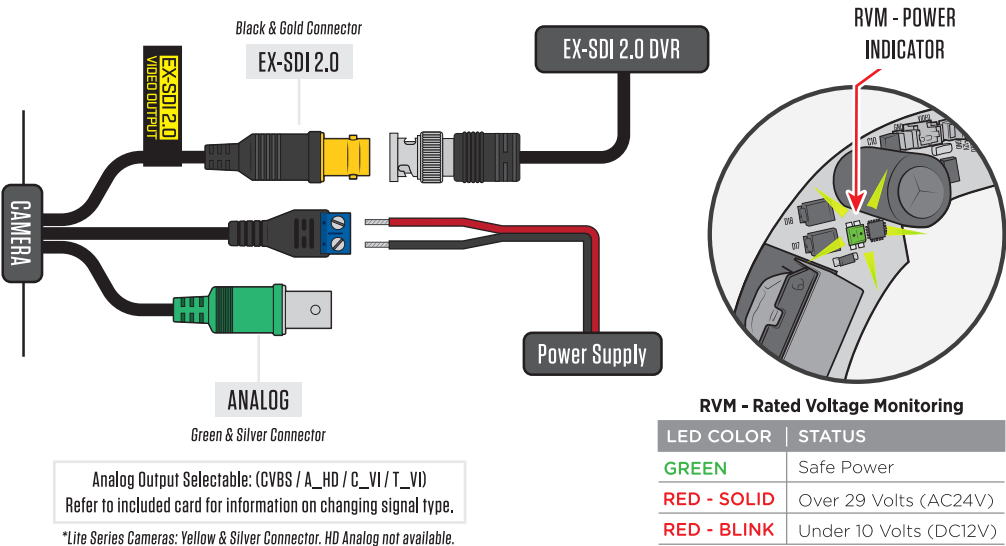
2. REMOVE DOME COVER

Hold the dome cover with one hand while gripping the finger grip tabs on the bottom of the camera base. Turn the finger grip tabs (camera base) counter-clockwise to separate it from the dome cover.



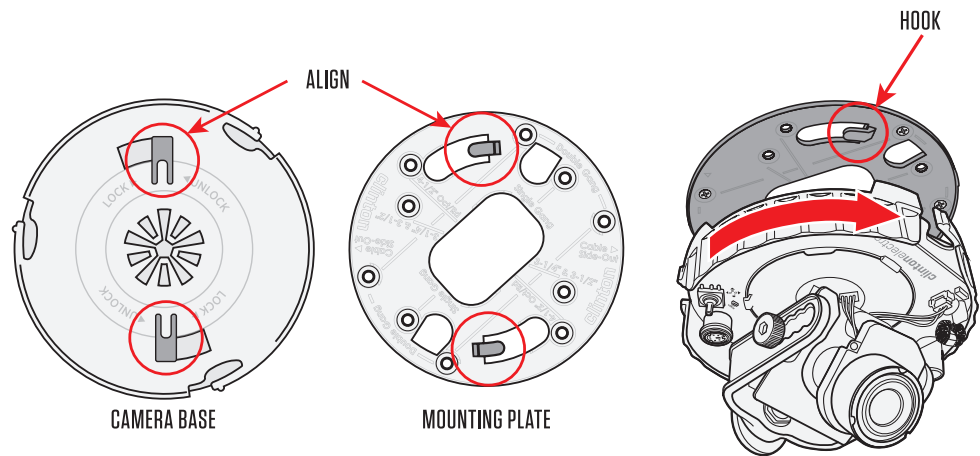
3. CONNECT CABLES

Make connections to the BNC and the power connection. Feed any cable slack into the mounting surface. A Power LED Indicator (on the circuit board) will illuminate GREEN when the camera is receiving correct power. To ensure quality operation, verify proper BNC and power termination, along with proper voltage at camera.



4a. ATTACH CAMERA TO MOUNTING PLATE (for cable exiting through mounting plate)

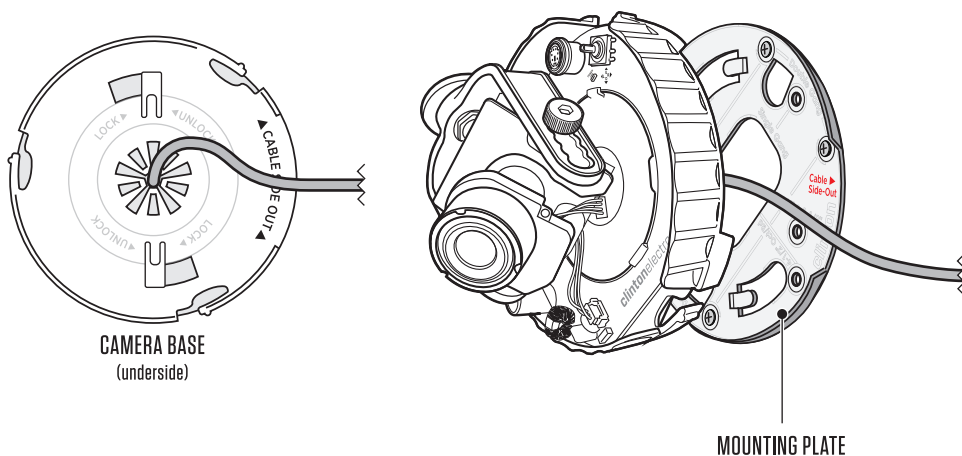
Attach the camera to the mounting plate by aligning the hooks on the mounting plate to the tabs on the camera base. Twist the camera base clockwise to lock it in place.



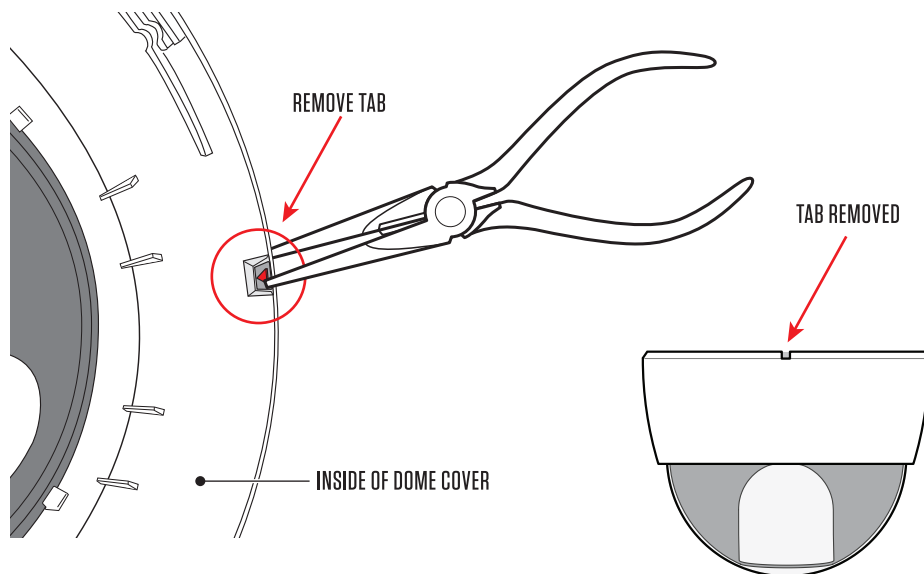
4b. ATTACH CAMERA TO MOUNTING PLATE (for cable side exit)

When running the cable out the side of the camera rather than through the center hole in the mounting plate, hold the cable to the camera base where it says "CABLE SIDE OUT." Align the cable exiting the camera to the notched out area on the mounting plate marked "Cable Side-Out"

Attach the camera to the mounting plate by aligning the hooks on the mounting plate to the tabs on the camera base. Twist the camera base clockwise to lock it in place.

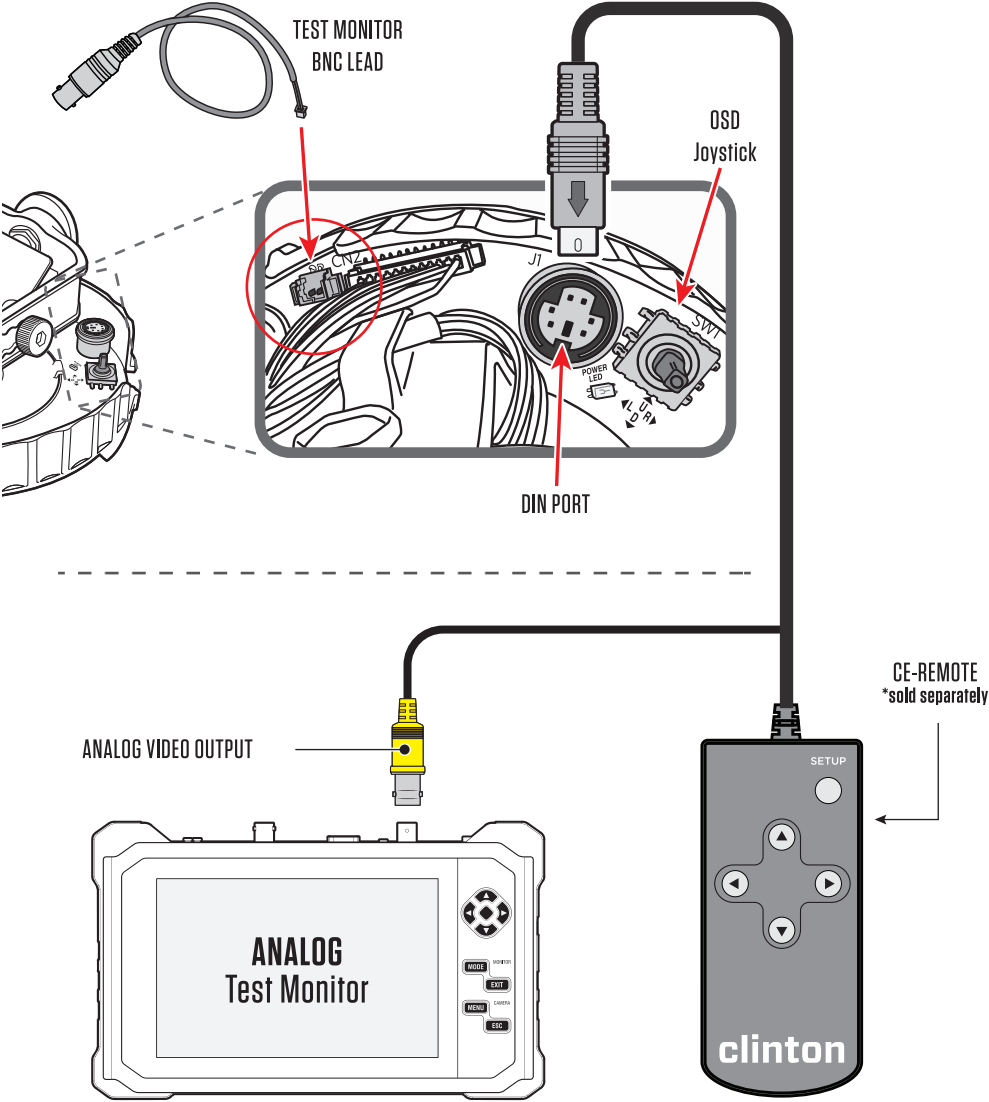


To allow the cable to exit the side of the dome cover, remove the tab marked with an arrow (on the inside of the dome cover) with a pair of needle-nose pliers.



5. TEST MONITOR / OSD CONTROL

To test the camera with a test monitor use either the supplied Test Monitor BNC Lead or optional CE-REMOTE. The Test Monitor BNC Lead plugs into the small, 2 PIN connector (marked CN2) next to the wide 12 wire connection on the circuit board. The CE-REMOTE plugs into the DIN Port. OSD Adjustment can be made by using the OSD Joystick or the optional CE-REMOTE. Refer to OSD Manual for detailed instructions on adjusting camera settings.



NOTICE

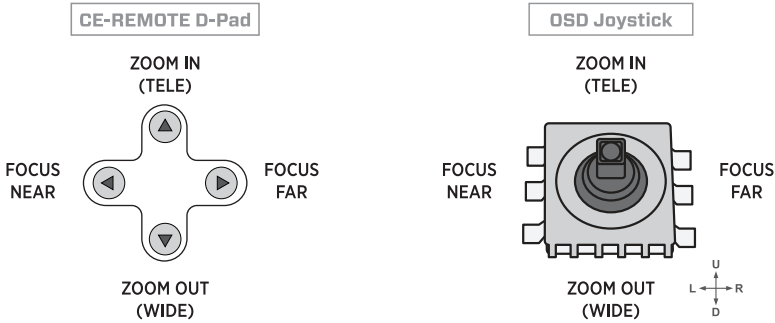
The test monitor connection on the CE-REMOTE and the 2-pin connector on the camera board are analog video outputs. The output will be the same from these connections as the main Analog connector. If the camera is set to an HD Analog option, ensure the test monitor will support that signal type. Certain OSD menu options are EX-SDI only and may not display video if connected to an analog monitor.

6. ZOOM / FOCUS ADJUSTMENT

The lens will auto focus once powered; this can take several seconds. To set the zoom either use the OSD Joystick or the directional buttons on the CE-REMOTE. Press UP to zoom in & press DOWN to zoom out.

After the zoom adjustment has been made the camera will auto focus again; this can take several seconds.

To manually adjust the focus: from the OSD Menu, change the AF MODE to Manual, then press either the LEFT or RIGHT buttons to manually set the focus. The camera will no longer Auto Focus if set to Manual.



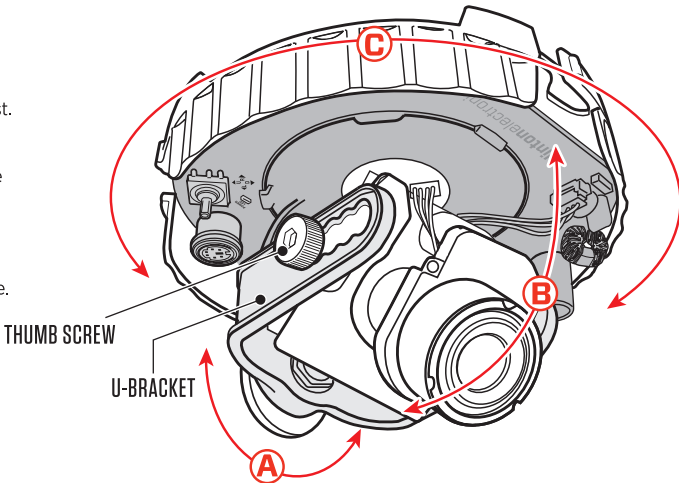
NOTICE

Upon initial installation/power ON of camera, the camera will begin to focus on the current scene. If there is an obstruction of the lens (installer or equipment in-front of the camera), the camera might focus on those objects and could appear out of focus. To refocus the camera either adjust the level of zoom (zoom in / zoom out) or power cycle the camera (power off - power on).

7a. CAMERA ANGLE ADJUSTMENT

Adjust the angle of the camera as necessary.

- A. Lens Rotation:** Rotate the U-Bracket on the gimbal to adjust.
- B. Lens Angle:** Loosen thumb screws on each side to adjust the tilt of the lens.
- C. Camera Plate Rotation:** Pinch the gimbal U-Bracket and rotate the camera assembly on the base.

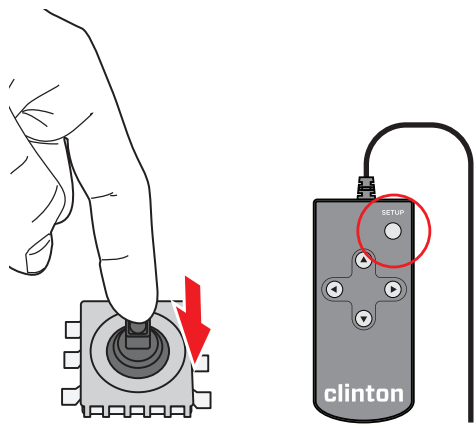


7b. ZOOM / AUTO FOCUS OSD MENU:

The IDX Series cameras with the Motorized Zoom/Focus lens have a special set of OSD Menu options.

Using the OSD Joystick click 'IN' (downwards toward the base of the cameras) or using the D-Pad on the CE-REMOTE press 'SETUP':

While on the ZOOMFOCUS option, click IN or press SETUP to enter the sub-menu.



CLINTON EXHD 2.0	
0. ZOOMFOCUS	↵
1. EXPOSURE	↵
2. WHITE BAL	ATW
3. IMAGE ADJ	↵
4. BACKLIGHT	OFF
5. DAY&NIGHT	AUTO ↵
6. DNR	MIDDLE
7. SPECIAL	↵
8. SERIAL	↵
9. SYSTEM	↵
10. EXIT	SAVE ↵

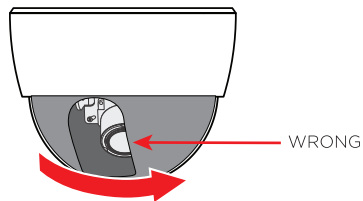
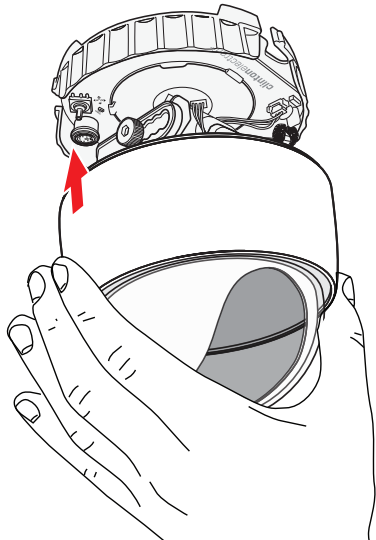
- AF MODE:** Choose either AUTO or MANUAL.
AUTO will focus automatically after zooming in/out.
MANUAL allows for manual focus using the joystick or D-Pad of CE-REMOTE.
- SCANNING:** Choose either HALF or FULL.
HALF- the lens scans only the current focal length, taking up to 30 seconds.
FULL- the lens scans the entire focal length, taking up to 1 minute or longer.
- ONEPUSHAF:** Press and hold the SETUP button to force the lens to Auto Focus to the current zoom level/focal length.
- SYNC TDN:** Set to ON to automatically change the focus when the camera switches from Day to Night mode.
- LENSRESET:** Press and hold the SETUP button to reset the focus of the lens.
- INITIALIZE:** When 'ON' the lens will automatically refocus during boot up/power on, even if set to Manual. For areas prone to storms/power outages set to 'OFF' to lock the focus and prevent the camera from refocusing during boot up.

ZOOMFOCUS	
AF MODE	AUTO
SCANNING	FULL
ONEPUSHAF	ON
SYNC TDN	OFF
LENSRESET	ON
INITIALIZE	ON
RETURN	↵

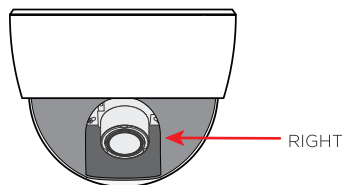
Refer to OSD Manual for detailed instructions on adjusting camera settings.

8. REPLACE DOME COVER

Prior to replacing the dome cover (for cameras without IR LEDs) remove the protective film on the inside of the dome cover. Carefully replace the dome cover onto the camera assembly by twisting the dome cover clockwise to lock into place. For standard/non-IR cameras with a dome mask, it may be necessary to rotate the clear dome slightly to align the cut out in the mask with the lens.



ROTATE DOME AS NECESSARY



EX-SDI Install Tips

The default SDI output (black connector) is set to: EX-SDI 2.0

COMPATIBILITY

While EX-SDI, HD-SDI and Analog share the same type of cable and connectors, that is where the similarities end.

- EX-SDI will not work on Analog only DVRs
- EX-SDI will not work on C_VI, T_VI, A_HD DVRs
- EX-SDI will not work on HD-SDI only DVRs

When making video connections, ensure the correct BNC connector is used (BLACK Connector is EX-SDI, GREEN Connector is Analog).



EX-SDI / HD-SDI



ANALOG VIDEO

*Lite Series Cameras: Analog is Yellow & Silver Connector.

UCC - Universal Coax Comm.

For UCC to function, SDI Output from the camera must be set to EX-SDI 2.0 & connected DVR must be EX-SDI 2.0/UCC compatible. The ID & Baudrate must match on Camera and DVR.

To change the ID & Baudrate of the camera: Enter the camera's OSD menu- then access the SERIAL Menu and scroll to CAM ID and/or BAUDRATE to set the desired settings.

SERIAL	
CAM ID	1
ID DISPLAY	OFF
BAUDRATE	9600
RETURN	↵

If set to HD-SDI or EX-SDI 1.0, UCC may NOT function.

*Refer to DVR manual to adjust ID & Baudrate settings.

**Depending on DVR model, there may be an option for UCC Type (A/B). For most 2MP cameras select Type B.

DISTANCES

The camera is defaulted to EX-SDI 2.0, which is capable of transmitting video up to 1,400' over RG59 coax cable.

Distances will vary depending on coax integrity.

HDSDI 275 Feet

EX-SDI 800 Feet

EX-SDI 2.0 1,400 Feet

Cable splices, improper BNC termination, damaged shielding, kinks and severe bends in the cable will reduce the possible distance of the video transmission.

*Greater distances are possible using RG6 Quad-Shield cable.

SDI Output

To change the digital video output of the camera (SDI Output): Enter the camera's OSD menu- then access the SYSTEM Menu and scroll to SDI Output and move left or right to change to the desired output.

SYSTEM	
SDI OUTPUT	EX-SDI 2.0
FRAME RATE	1080 30p
VIDEOSYS	NTSC
CVBS FILTER	OFF
LANGUAGE	ENG
CAM TITLE	OFF
RESET	ON
RETURN	↵

HD-SDI / EX-SDI 1.0 / EX-SDI 2.0

*Refer to camera OSD manual for more information.

If you need further help call Clinton Electronics Technical Support at 800-549-6393.

**Information in this document is subject to change without notice*

v.06.04.19