

VXPC • VXDPC

INSTALLATION GUIDE

Included Items:

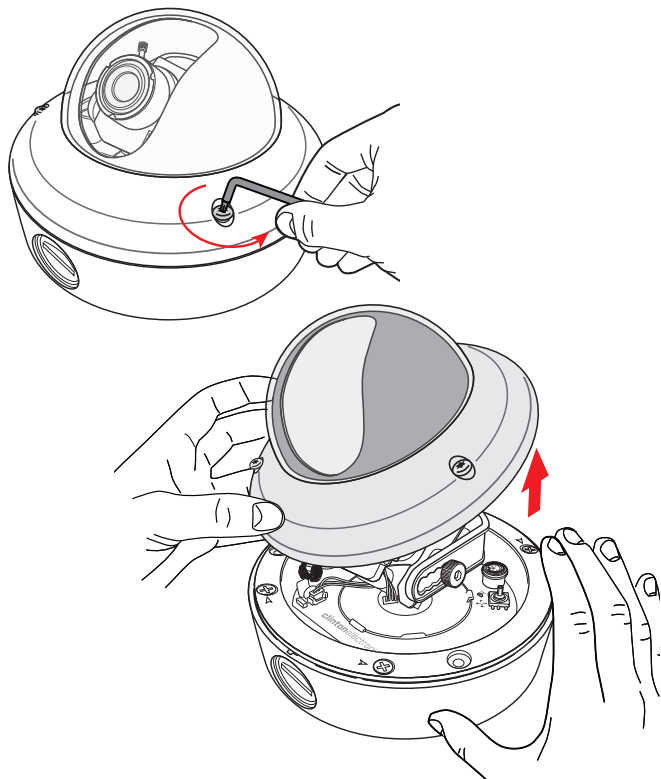
- Vandal X Pendant Cap x 1
- Conduit Set Screws x 2
- Allen Wrench x 1

Required Items:

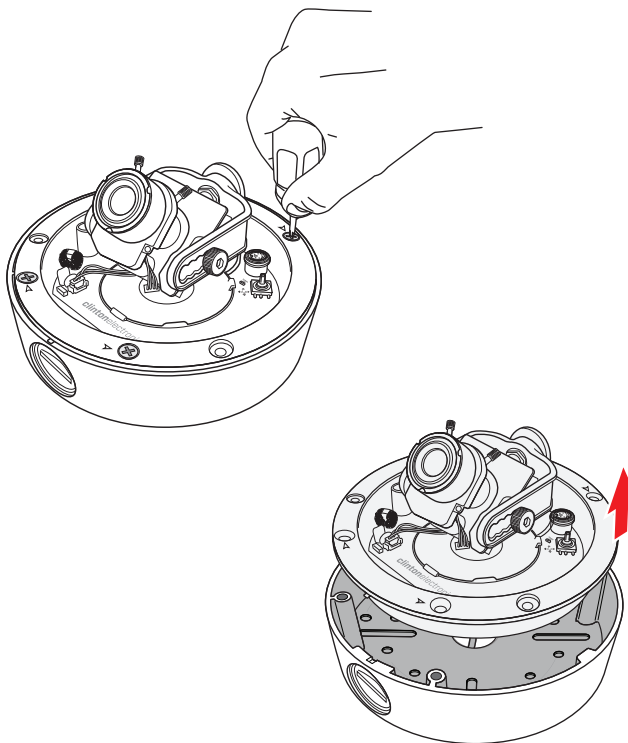
- Vandal X Camera
- Phillips Head Screwdriver
- 3/4" EMT Conduit or CP3W (3' Camera Pole), CP6W (6' Camera Pole), or CP12W (12' Camera Pole)

1. DISASSEMBLE

a. Use the supplied Torx wrench (that came with the Vandal X camera) to remove the 3 Torx screws that hold the dome assembly onto the base. Remove the top dome cover from the camera base.

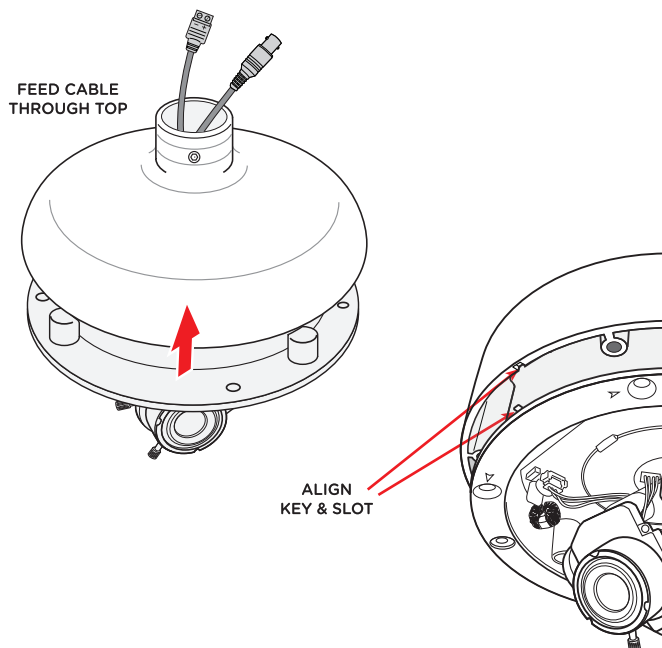


b. Locate and remove the 4 Phillips head screws that hold the inner case onto the camera base. Remove the inner camera case from the camera base as shown below.



2. INSTALL PENDANT CAP

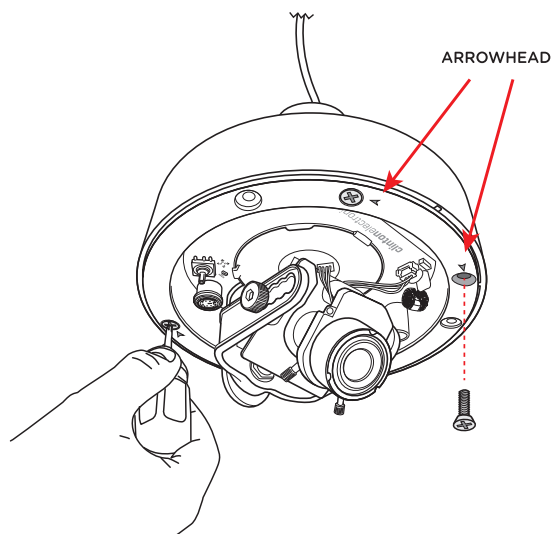
a. Feed the cable through the top opening in the Pendant Cap, and replace the inner camera assembly. Align the key on the lip of the inner camera assembly with the slot on the Pendant Cap when reassembling.



IF KEY & SLOT ARE NOT ALIGNED PROPERLY THE WEATHER RESISTANT SEAL WILL BE COMPROMISED, ALLOWING WATER TO LEAK INTO THE CAMERA.

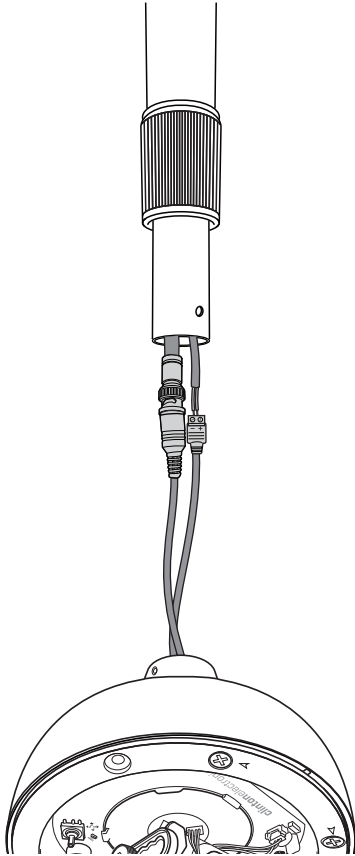


b. Replace the four Phillips head screws that hold the inner case to the Pendant Cap. The four holes are marked with arrowheads.



3. ATTACH CABLES

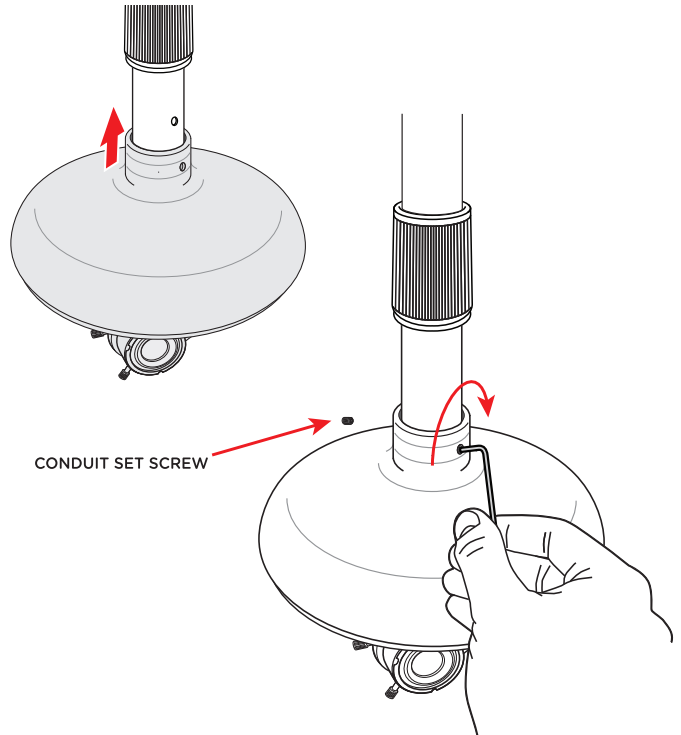
Make connections to the BNC cable and the power connection. Feed any cable slack into the 3/4" EMT conduit or Camera Pole. To ensure quality operation, verify proper BNC and power termination; along with proper voltage at camera.



4a. ATTACH PENDANT CAP

For Non-Threaded Conduit/Camera Pole.

Attach the Pendant Cap to either the 3/4" EMT conduit or Camera Pole. Insert the 2 supplied Conduit Set Screws into the holes on the Pendant Cap and tighten against the pole/conduit. Make sure the Conduit Set Screws are secured tight to the pole/conduit to ensure it does not fall.



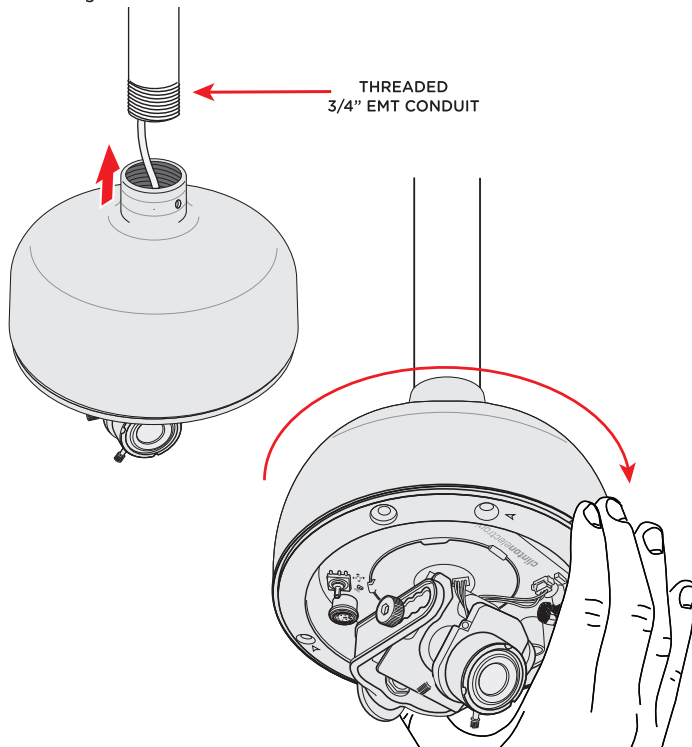
IF SET SCREWS AREN'T FULLY TIGHTENED THE CAMERA COULD FALL FROM THE POLE, RESULTING IN PERSONAL INJURY OR PROPERTY DAMAGE.



4b. ATTACH PENDANT CAP

For Threaded Conduit, (VXDPC Only).

Attach the Pendant Cap to either threaded 3/4" EMT conduit or threaded connector. Rotate the Deep Pendant Cap camera assembly to tighten. Make sure the camera is secured tight to the conduit to ensure it does not fall.

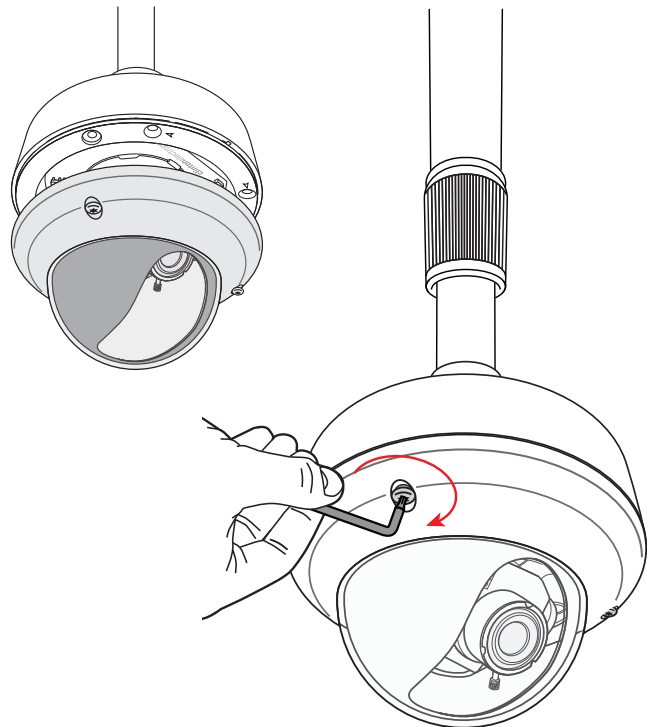


IF NOT FULLY TIGHTENED TO THE THREADED CONDUIT THE CAMERA COULD FALL FROM THE POLE, RESULTING IN PERSONAL INJURY OR PROPERTY DAMAGE.



5. ATTACH DOME COVER

Carefully install the dome cover onto the inner camera assembly. Then using the supplied Torx wrench from the Vandal X camera, tighten the 3 Torx screws that hold the dome cover onto the inner camera assembly. Make sure each screw is tight to ensure superior weather resistance.



IF TORX SCREWS AREN'T FULLY TIGHTENED THE WEATHER RESISTANT SEAL WILL BE COMPROMISED, ALLOWING WATER TO LEAK INTO THE CAMERA.

