

VX Series Install Guide

For Standard / Non-IR LED Cameras

CE-VX15(B) • CE-VX20(B) • CE-VX40(B) • CE-VX45(B) • CE-VX60(B) • CE-VX70(B)

Included Items:

- Vandal X Series Dome Camera x 1
- Torx Wrench (T20 Security) x 1
- Instructions x 1
- Mounting Screws x 4
- Drywall Anchors x 4
- Focusing Tool x 1 (only VX60 models)

Required Items:

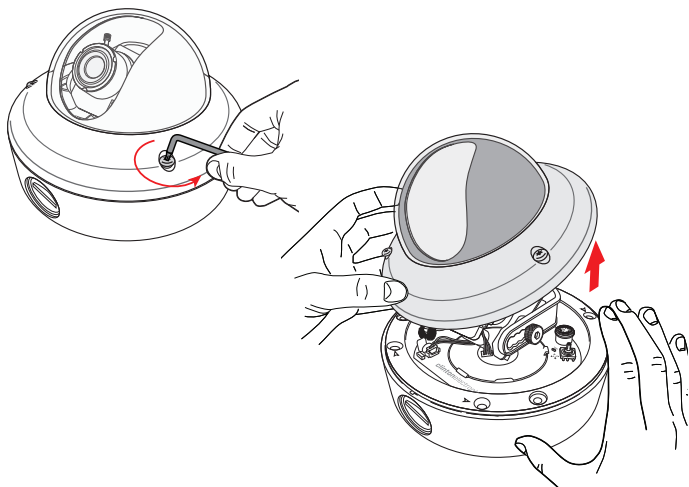
- Phillips Head Screwdriver
- Power Supply

Optional Items:

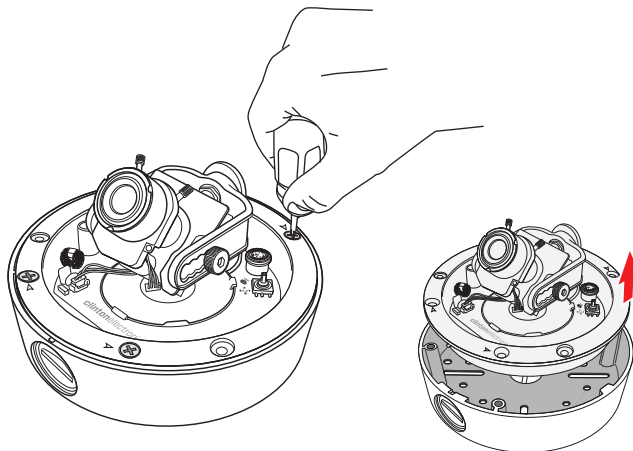
- CE-REMOTE (OSD Remote Control)
- Test Monitor

1. DISASSEMBLE

a. Use the supplied Torx wrench to loosen the 3 Torx screws that hold the dome assembly onto the base. Remove the top dome cover from the camera base.



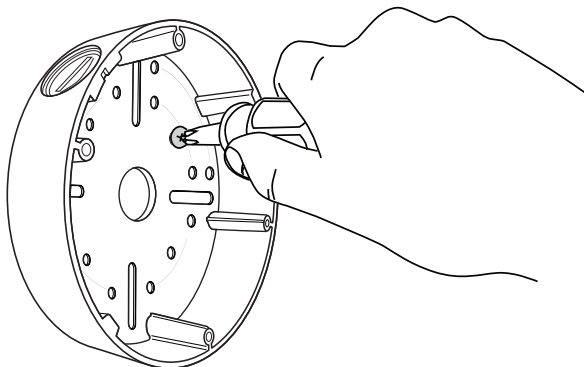
b. Remove the four Phillips head screws that hold the inner case onto the camera base, then remove the inner camera assembly from the camera base.



2. MOUNT OUTER CASE

If mounting to solid surface, use the four Phillips head mounting screws & drywall anchors if necessary.

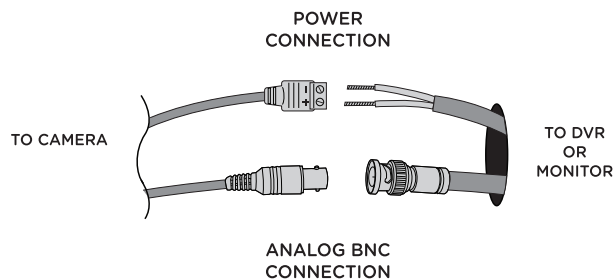
If mounting to a conduit box, choose the mounting hole pattern that best suits your application and use the appropriate screws. Multiple mounting hole patterns are provided.



3. ATTACH CABLES

Feed the power and video cables through the desired access hole. There is a hole on the bottom of the case or a hole on the side. (Using the side hole requires removing the slotted plug, replace plug from side to bottom)

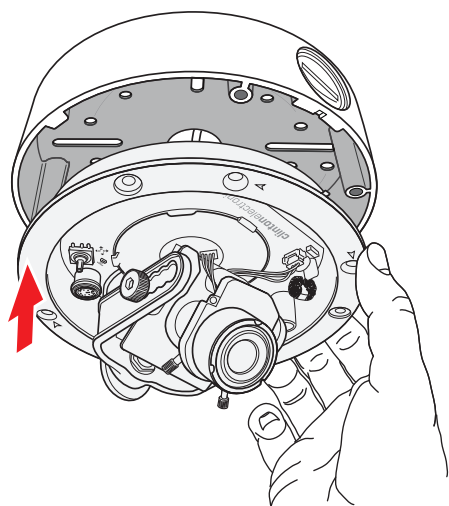
Make connections to the BNC cable and the power connection. Feed any cable slack into the mounting surface.



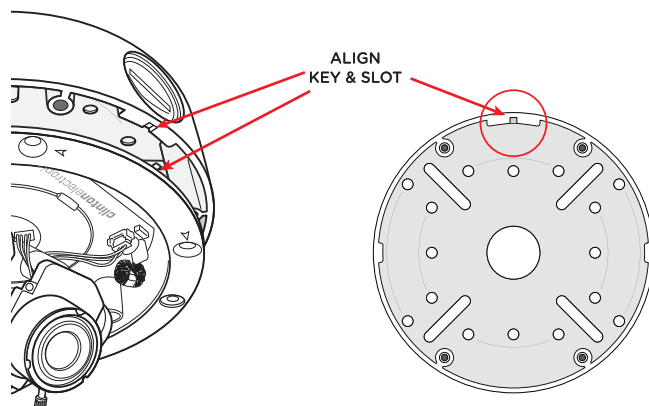
To ensure quality operation, verify proper BNC and power termination; along with proper voltage at camera.

4. ATTACH CAMERA

a. Replace the inner camera assembly into the mounting base as shown below.



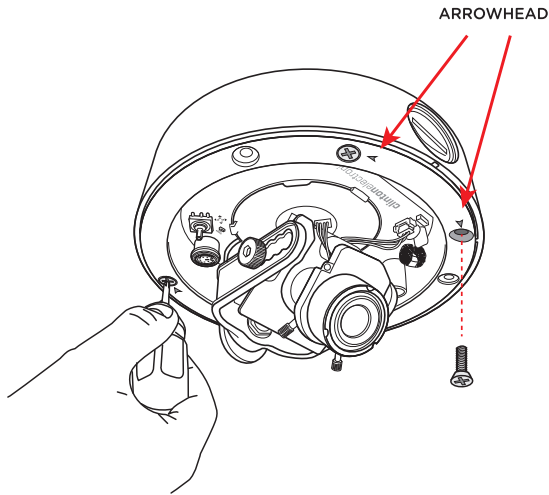
b. Align the key on the lip of the inner camera assembly with the slot on the camera base when reassembling. If these are not aligned properly the weather resistant seal will be compromised, allowing water to leak into the camera.



IF KEY & SLOT ARE NOT ALIGNED PROPERLY THE WEATHER RESISTANT SEAL WILL BE COMPROMISED, ALLOWING WATER TO LEAK INTO THE CAMERA.

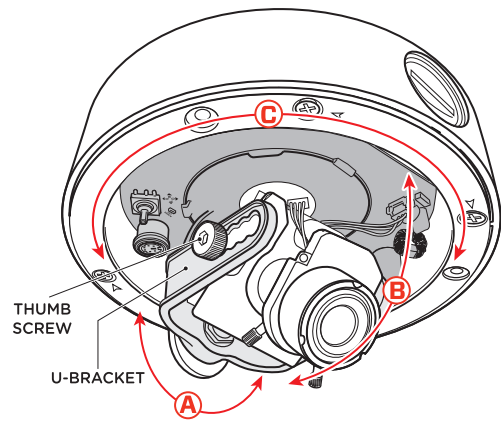
4. ATTACH CAMERA continued...

C. Replace the four Phillips head screws that hold the inner case to the camera base. The four holes are marked with arrowheads.



5a. CAMERA ADJUSTMENT

Vandal X Series cameras have 3 adjustable positions, adjust the angle as necessary.



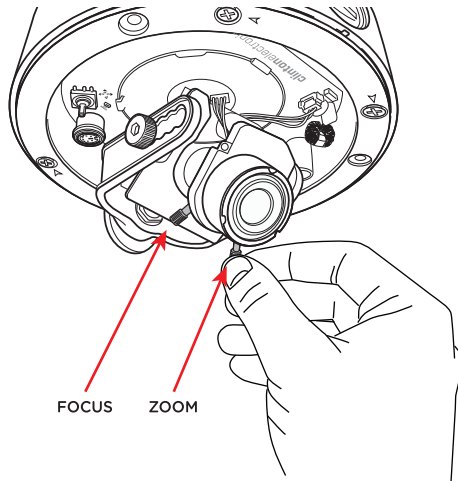
A. Lens Rotation: Rotate the U-Bracket on the gimbal to adjust.

B. Lens Angle: Loosen thumb screws on each side to adjust the tilt of the lens.

C. Camera Plate Rotation: Pinch the gimbal U-Bracket and rotate the camera assembly on the base.

6. ZOOM/FOCUS ADJUSTMENT

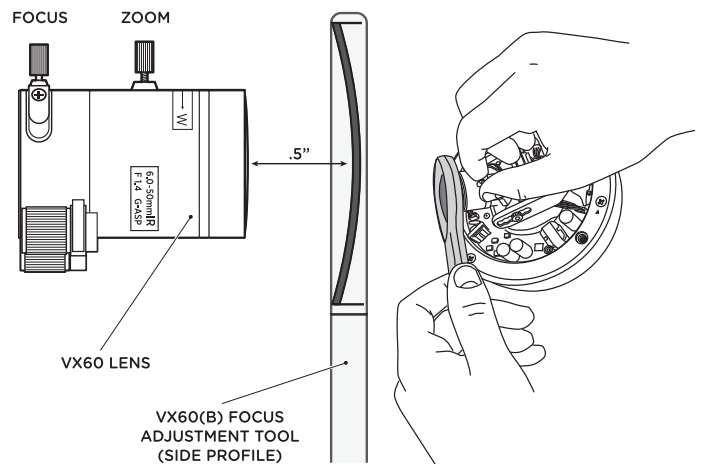
Loosen the appropriate adjustment lever by turning counter-clockwise. To widen or narrow the viewing angle rotate the ZOOM lever to the Left or Right. Rotate the Focus lever Left or Right to focus the lens.



After adjustments have been made make sure to tighten the adjustment levers to lock the adjustments into place.

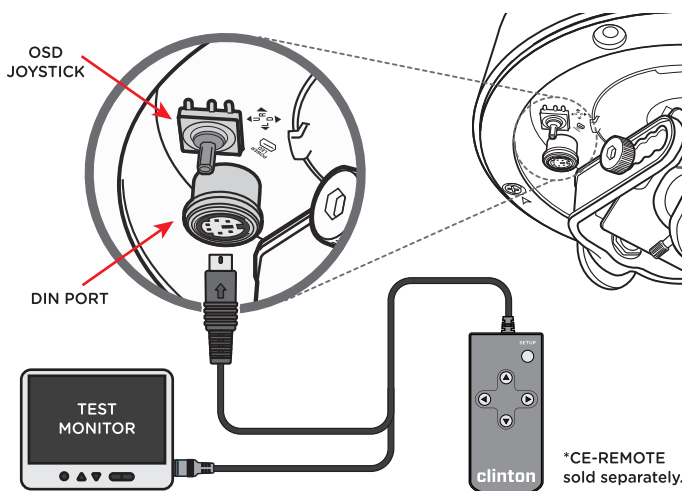
VX60(B) Cameras ONLY

With a test monitor attached, place the supplied focus adjustment tool approximately 1/2" in front of the lens (concave side in), to simulate the dome being attached. Adjust the lens as needed to achieve proper focus.



7. TEST MONITOR/OSD CONTROL

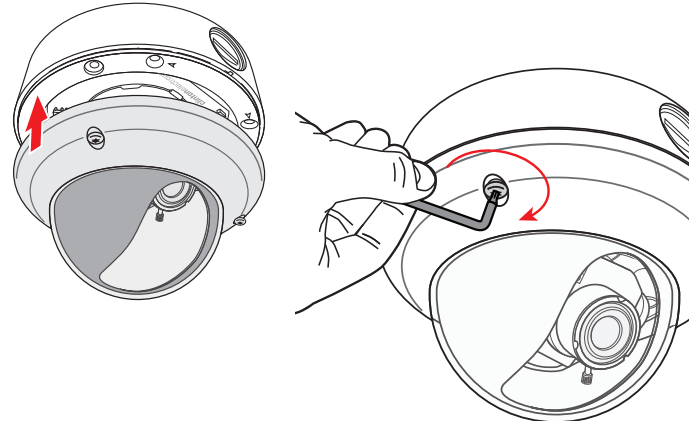
Before replacing the dome assembly you may wish to test the camera with a test monitor. To test, plug in the CE-REMOTE into the DIN Port, and connect your test monitor to the BNC connection located on the CE-REMOTE cable. OSD Adjustment can be made by using the OSD Joystick or the optional CE-REMOTE.



Refer to OSD Manual for detailed instructions on adjusting camera settings.

8. REASSEMBLE

Carefully install the dome cover onto the camera base. Then using the supplied Torx wrench, tighten the 3 Torx screws that hold the dome cover onto the base. Make sure each screw is tight to ensure superior weather resistance.



IF TORX SCREWS AREN'T FULLY TIGHTENED THE WEATHER RESISTANT SEAL WILL BE COMPROMISED, ALLOWING WATER TO LEAK INTO THE CAMERA.