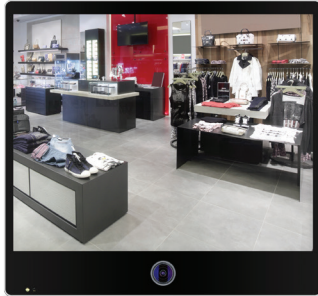


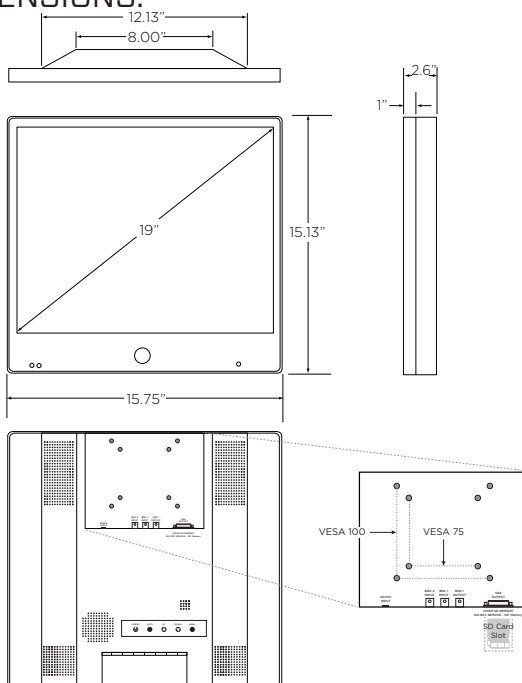
## CE-M19S-B 19" Public View Monitor (Black)



### INFO:

- 1280 x 1024 Resolution
- 4:3 Aspect Ratio
- "Recording In Progress" or "Welcome" Text Overlay
- Flashing LED
- Acrylic Front
- 2 BNC Outputs / 1 BNC Input for External Camera
- 1,000 TVL Camera
- 2.8-12mm (F1.2) Lens
- Video Motion Detection
- Built-in SD Card Player (4GB Card Included)
- DC24V (Power Supply Sold Separately)
- UL Listed

### DIMENSIONS:



Recommended Power Supply	
CE-PS200	120W Single Monitor Power Supply (24VDC)
CE-S320-B	320W Multiple Monitor Power Supply (24VDC)
CE-600-24-B	600W Multiple Monitor Power Supply (24VDC)

### SPECIFICATIONS:

Monitor	
Display	19" LED Backlight LCD
Resolution	1280 x 1024
Aspect Ratio	4:3
Display Colors	16.7M
Brightness	400 nit
Contrast Ratio	1000:1
Viewing Angle (H x V)	178° x 178°
Response Time	5ms
Mounting	VESA 75 & 100
In / Out Impedance	75Ω /Auto Terminating Output
Video Inputs / Outputs	1 BNC Input / 2 BNC Outputs
Power Consumption	48 Watts
Power Requirement	DC24V
Operating Temperature	32°F - 104°F / 0°C - 40°C
Dimensions (W x H x D)	15.75" x 15.13" x 2.61" 400.05mm x 384.302mm x 66.04mm
Weight	13 lbs / 5.896kg

Camera	
Image Sensor	1/3" Mega SONY Exmor
Resolution	1000 TVL
Effective Pixels	1305 (H) x 1049 (V), 1.37 Mega Pixels
Scanning System	2:1 Interlace
S/N Ratio	52dB
Sync System	Internal
Minimum Illumination	0.00001 Lux (Sens-Up x32)
Shutter Speed	1/60 - 1/60,000 sec.
Lens	2.8 - 12mm (F1.2) Lens
Video Output	1.0 Vp-p, 75Ω
Frequency	Horizontal: 15.734 KHz, Vertical: 59.94 Hz

Camera OSD (S7)	
Lens	DC, Manual
Exposure	Brightness, Shutter, Sens-Up, AGC
White Balance	ATW, AWB, AWC->Set, Manual
Backlight	HLC, BLC, WDR
DNR	Off, Low / Middle / High
Day & Night	Auto, Color, B/W, Extern
Image	Sharpness, Gamma, Pedestal, Color Gain, Mirror, Flip
System	COM., View Angle, CVBS, Reset
Special	D-Zoom, D-WDR, Defog, Shading, Privacy, Intelligent: Motion / Alarm / Quick Zoom
Exit	Save, Not Save, Reset

### CERTIFICATIONS:

