

## CE-LA19

Small Adjustable Wall Mount



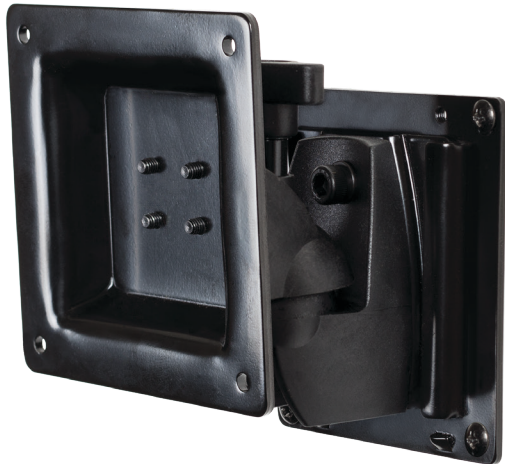
**Maximum Load Capacity: 13 lbs / 5.896 kgs**



### KEY FEATURES:

- Two Piece Design for Easy Installation
- 2 Axis Adjustment; 160° horizontal pan & 25° downward tilt
- VESA 75
- Screws and Tools Included

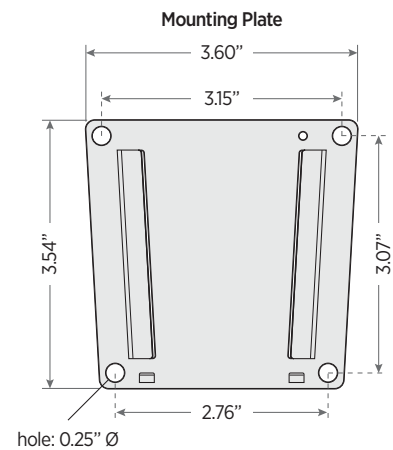
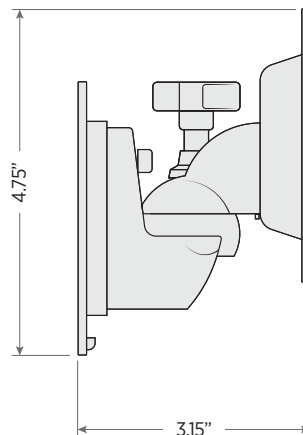
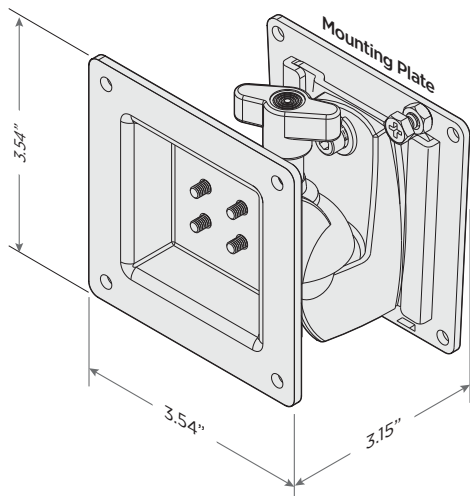
*\* Recommended for LCD or PVM up to: 13 lbs*



### GENERAL

Materials	Steel
Dimensions (Overall) L x W x H	3.15" x 3.60" x 4.75" 80mm x 91.5mm x 120.5mm
Weight	1.25 lbs / 0.56 kg

### DIMENSIONS:



unit: inches