

# CC SERIES: CE-CC110 • CE-CC115 CE-CC118WD • CE-CC119

## Analog Box Camera Installation Guide

### Included Items:

- Camera x 1
- Auto Iris Lens Connection Plug x 1
- C-Mount Lens Adapter x 1
- OSD (On Screen Display) Manual x 1

### Required Items:

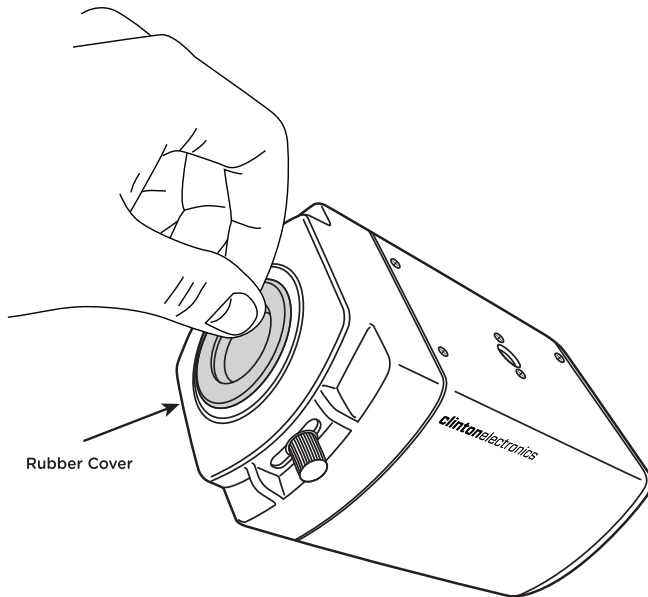
- CS-Mount lens or C-Mount lens
- Camera Mounting Bracket

### Optional Items:

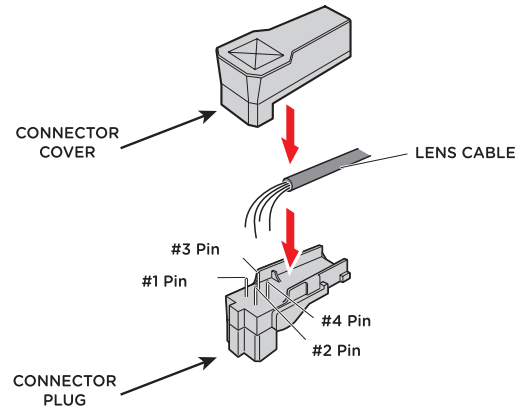
- CE-REMOTE (OSD Remote Control)

## 1. LENS

**a.** Remove the protective rubber cover from the camera front in preparation for lens installation.



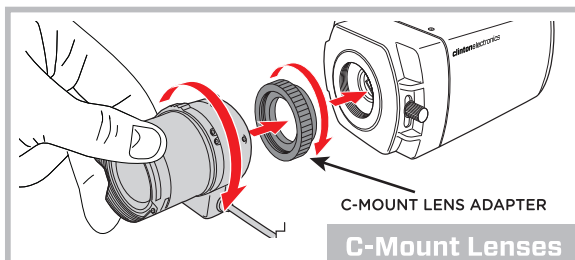
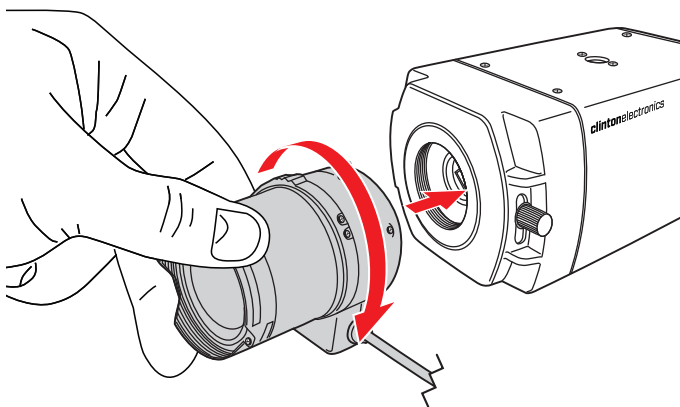
**b.** If using a lens that does not have a pre-installed auto iris connection plug on the lens cable, use the supplied Auto Iris Connection Plug. Strip approximately 3/8" from the lens cable, then strip approximately 1/16" from each of the 4 wires inside the lens cable. Solder each wire to the appropriate pin. (see chart below)



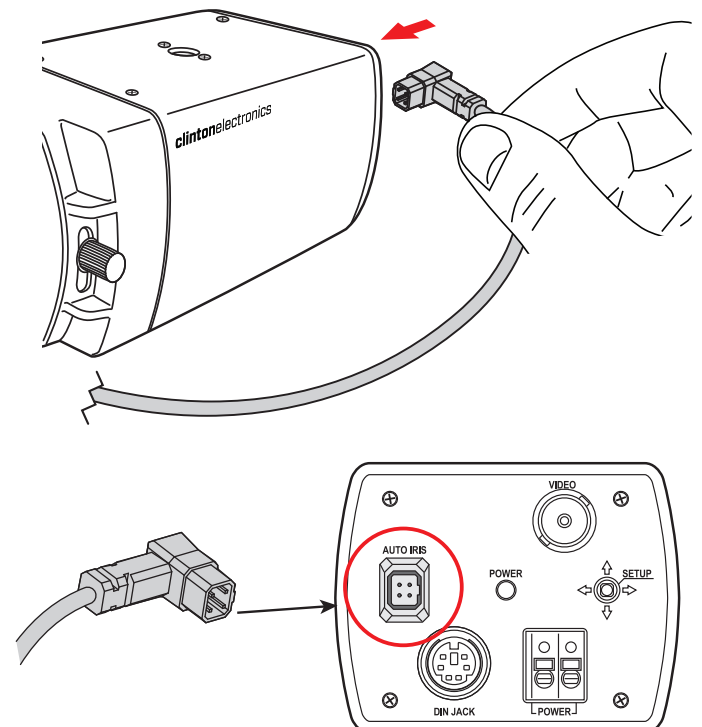
Pin #	DC LENS	VIDEO LENS
#1 Pin	Damping -	RED (power)
#2 Pin	Damping +	NC
#3 Pin	Drive +	WHITE (video signal)
#4 Pin	Drive -	BLACK (ground)

**c.** Screw the desired CS-Mount lens clockwise into camera body.

If using a C-Mount lens; use the supplied C-Mount lens adapter between the lens and the camera body. Failure to use the C-Mount Lens Adapter when using a C-Mount lens could result in damaging the camera sensor.

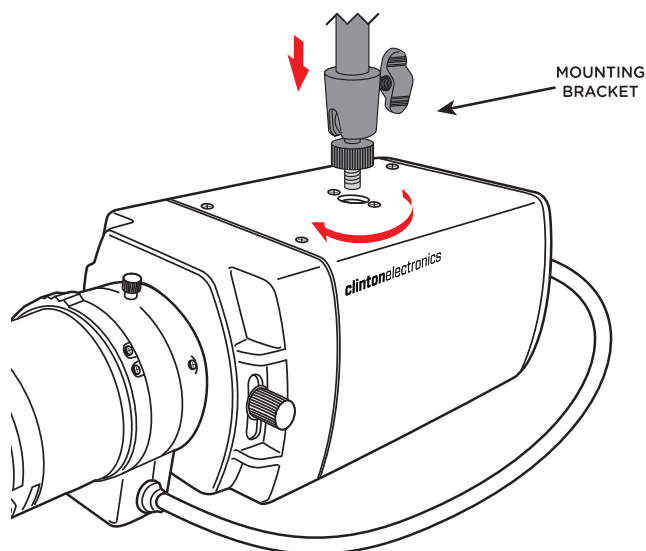


**d.** Insert the auto iris connection plug into the auto iris jack located on the back of the camera body.



## 2. MOUNT CAMERA

Thread screw from mounting bracket into the hole on either the top or bottom of the camera housing.



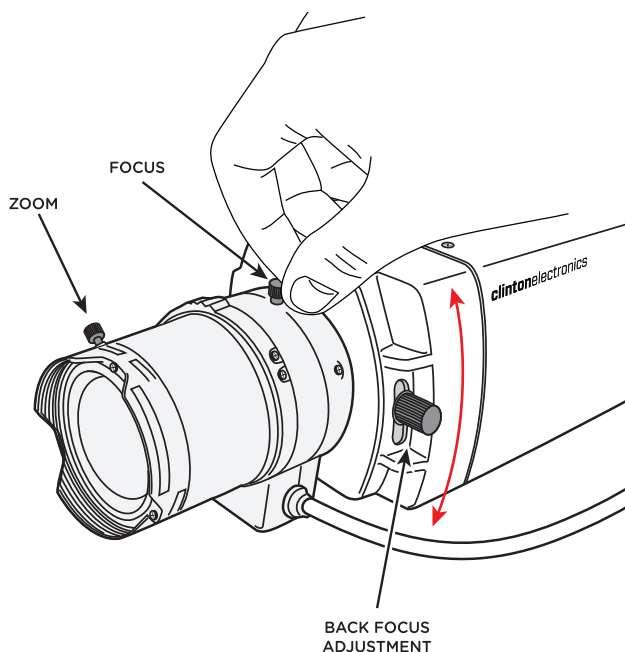
*\*Mounting Bracket sold separately.*

*Mounting bracket shown may vary from actual mounting bracket used.*

## 4. ZOOM/FOCUS ADJUSTMENT

To adjust the zoom and focus of the camera use your fingers to loosen the appropriate adjustment knob. Widen the viewing angle by rotating the zoom knob to the Left. To narrow the viewing angle rotate the zoom knob to the Right. Rotate the focus knob Left or Right to focus the lens.

Theoretically, it should be possible to just thread in a lens and have the image in focus, but due to slight differences in manufacturing tolerances on both lenses and cameras, it may be necessary to back-focus the camera to achieve proper focus.

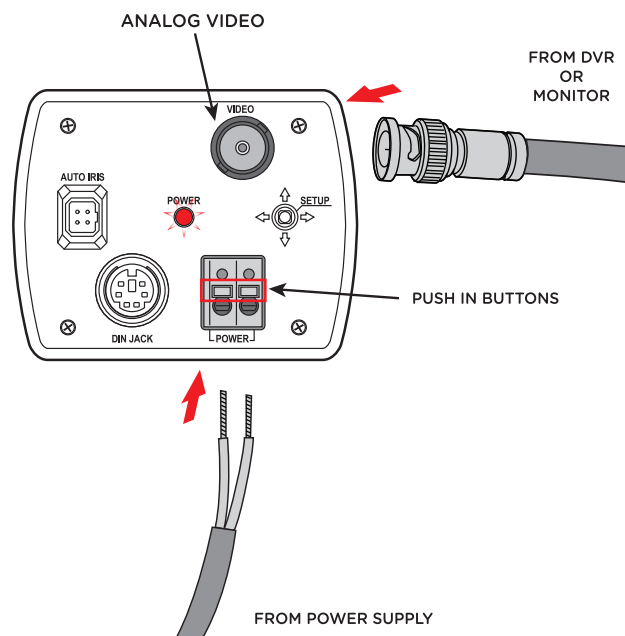


*Actual lens ZOOM/FOCUS adjustments may vary from those shown. After adjustments have been made make sure to tighten the adjuster knobs to lock the adjustments into place.*

## 3. ATTACH CABLES

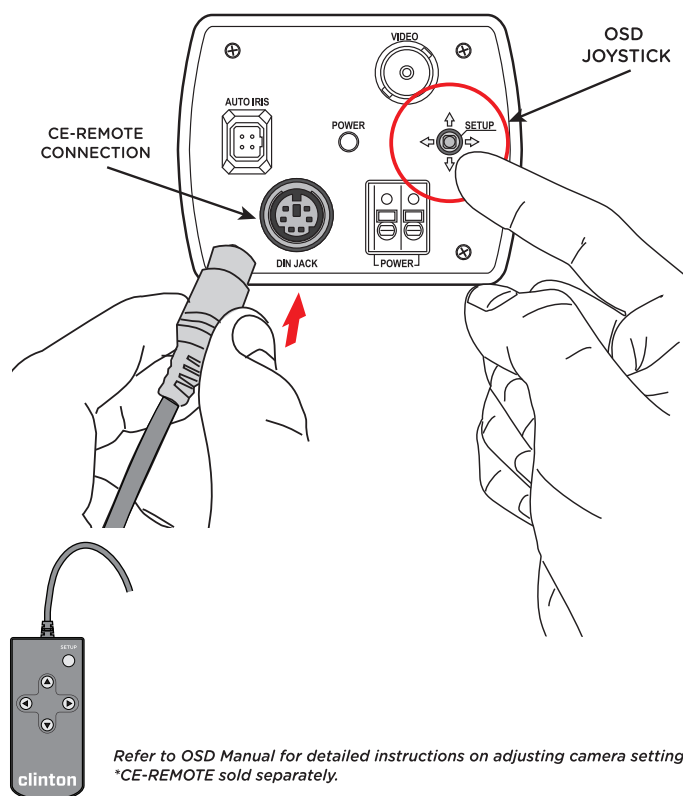
Connect quality coax cable to the analog BNC connector on the back of the camera. While supporting the camera, press in and hold the buttons on the AC24V IN / DC12V IN port, then insert the power wires. The positive and negative wires can go in either hole. Once power is supplied to the camera the red LED will light.

To ensure quality operation, verify proper BNC and power termination; along with proper voltage at camera.



## 5. OSD CONTROL

Before completing the installation you may wish to test the camera with a test monitor and make adjustments to the camera settings in the OSD (On Screen Display) Menu. Press the SETUP joystick "IN" to access the main menu, or attach the CE-REMOTE\* to the DIN JACK port on the back of the camera.



*Refer to OSD Manual for detailed instructions on adjusting camera settings.  
\*CE-REMOTE sold separately.*