

CE-178A • CE-178A-G

INSTALLATION GUIDE

Included Items:

- Monitor Wall Mount x 1
- Bubble Level x 1
- Wall Anchor Expansion Screws x 4
- Display VESA screws x 4
- 13-14mm Wrench x 1

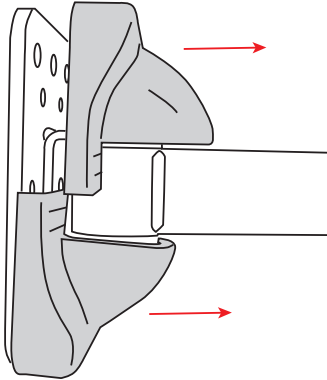
Required Items:

- Phillips Head Screwdriver
- Drill with 5/16" Masonry Drill Bit
- Pencil
- 10mm Wrench

⚠ Maximum Load Capacity: 35 lbs / 15 kgs ⚠

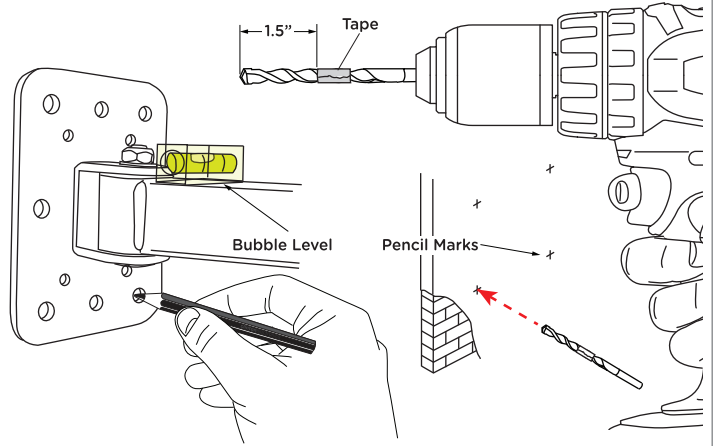
1. REMOVE COVERS

Pull the mount covers straight out from the base of the wall mount to access the mounting holes.



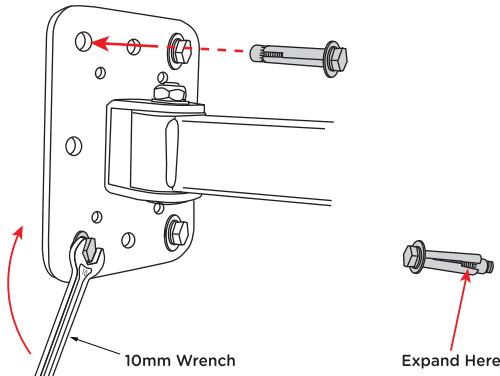
2. DRILL HOLES

With the bubble level placed on the arm, place the mount in the desired mounting position, and mark the holes with a pencil. With a 5/16" masonry drill bit, drill holes 1.5" deep into the mounting surface. (You can measure the depth of your drill by wrapping a piece of tape around the drill bit).



3. MOUNT TO CONCRETE / BRICK

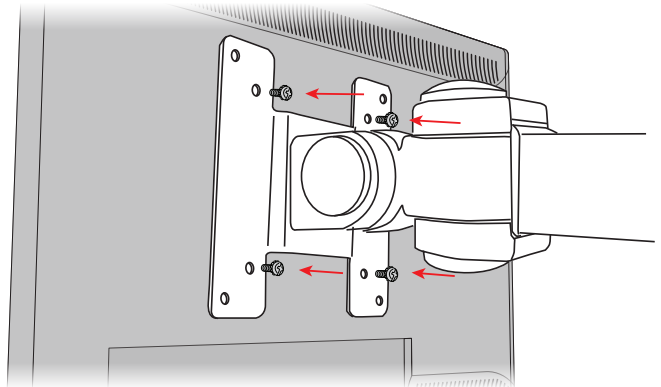
Clean the dust from the holes and then push the wall anchor expansion screw into the holes until the head of the bolt is flush against the mounting plate. Finger tighten, then use a 10mm wrench to fully secure.



If the bolt assembly does not start to expand, remove it and gently pry the expansion sleeve open to initiate expansion in the hole.

4. ATTACH MONITOR

Attach your display to the wall mount using the VESA mounting holes, and the 4 supplied VESA screws.

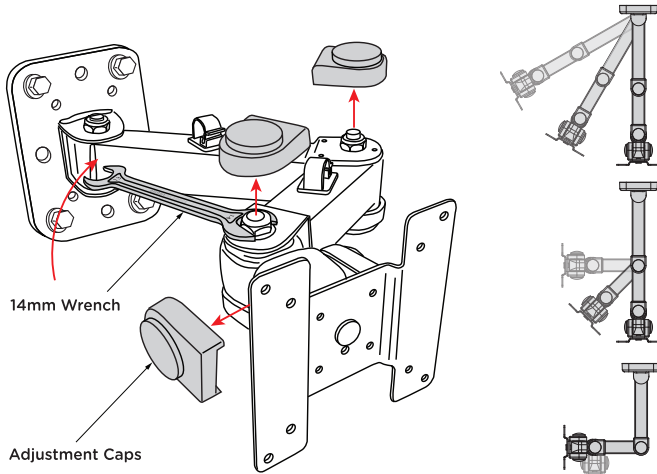


This mount is intended for use only with the maximum weights indicated. Use with products heavier than the maximum weights indicated may result in instability causing possible injury.



5. ADJUSTMENTS

Remove the 3 plastic adjustment caps as shown below to access the three adjustment nuts. Adjust the viewing angle using the included 14mm wrench.



Replace base plate covers and adjustment caps when finished making adjustments

6. CORD MANAGEMENT

Run your power and audio/video cables into the cord management clips.

