

VXWB(B)

INSTALLATION GUIDE

Included Items:

- Vandal X Wall Bracket x 1
- Mounting Template x 1
- Phillips Head Wood Screws x 4
- Phillips Head Sheet Metal Screws x 2
- Drywall Anchors x 4
- Washers x 4

Required Items:

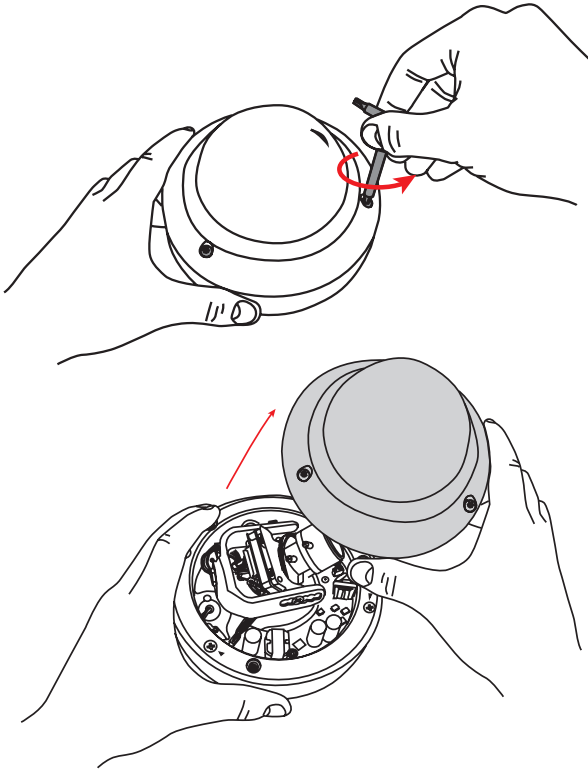
- Phillips Head Screwdriver or Drill with Phillips Head Bit

Optional Items:

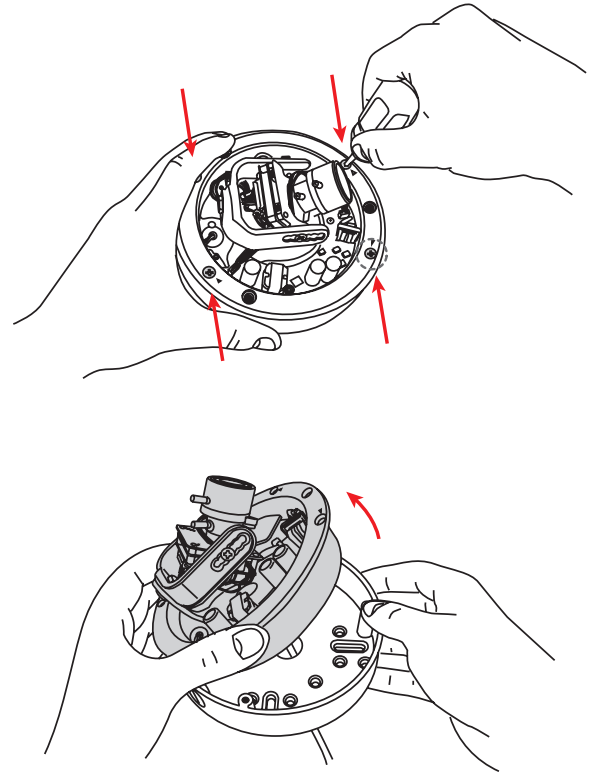
- CE-VXAP: Adapter Plate for mounting to 4" Round or Double Gang conduit boxes

1. DISASSEMBLE

a. Use the supplied Torx wrench (that came with the Vandal X camera) to remove the 3 Torx screws that hold the dome assembly onto the base. Remove the top dome cover from the camera base.



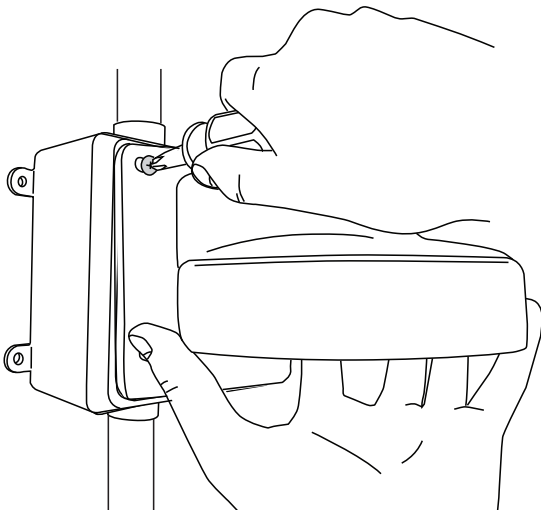
b. Locate and remove the 4 Phillips head screws that hold the inner case onto the camera base. Remove the inner camera case from the camera base as shown below.



2. MOUNT WALL BRACKET

4" SQUARE BOX INSTALLATION

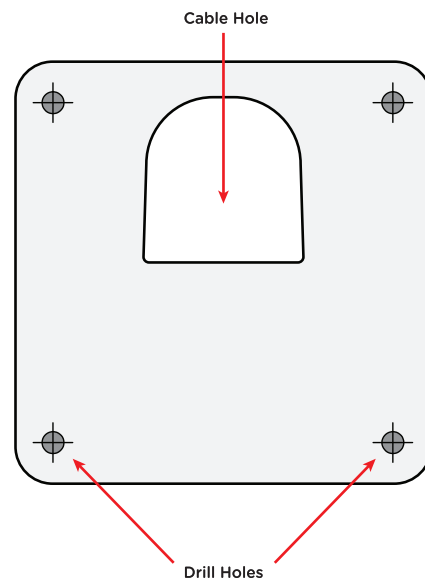
Secure the wall bracket to the 4" Square Conduit Box with the supplied sheet metal screws and washers. Use the optional CE-VXAP adapter plate (sold separately) for conduit 4" Round or Double Gang boxes if necessary.



DRYWALL or WOOD INSTALLATION

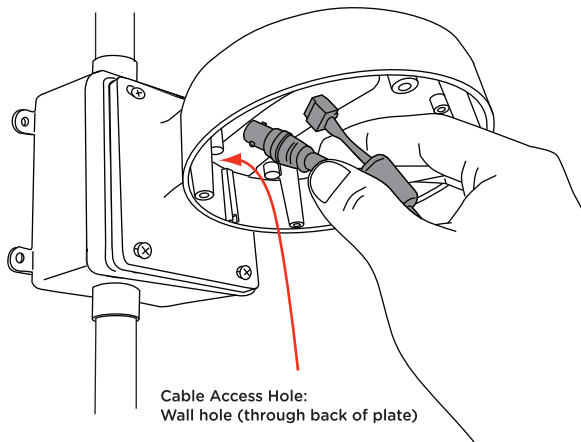
Using the supplied Mounting Template drill 4 pilot holes into the mounting surface (after checking that the template is level). If no hole for the cables is already present, one will need to be made in the Cable Hole.

Insert the drywall anchors into the pilot holes if mounting to drywall. Then secure the wall bracket to the mounting surface with the supplied 4 Phillips head wood screws and washers.

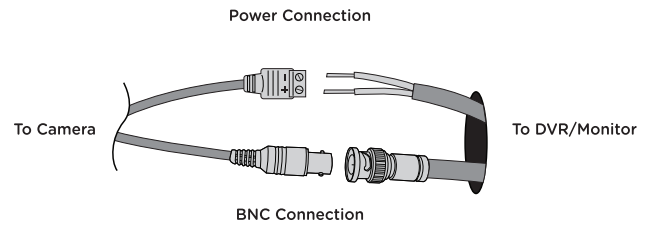


4. ATTACH CABLES

- a. Feed the power and video cables through the rear access hole.



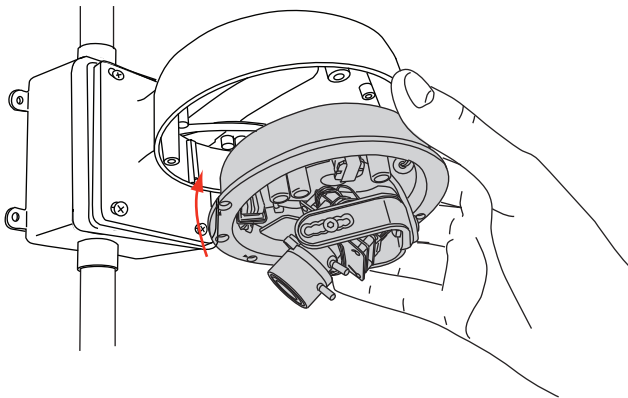
- b. Make connections to the BNC cable and the power connection. Feed any cable slack into the mounting surface.



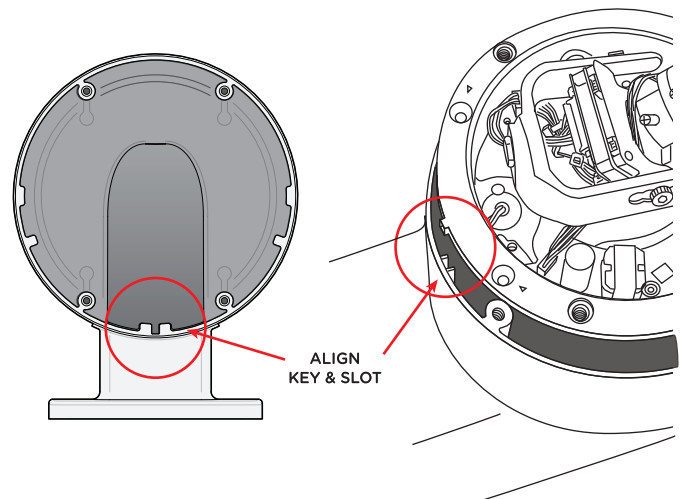
To ensure quality operation, verify proper BNC and power termination; along with proper voltage at camera.

4. ATTACH CAMERA

- a. Replace the camera assembly into the wall bracket.

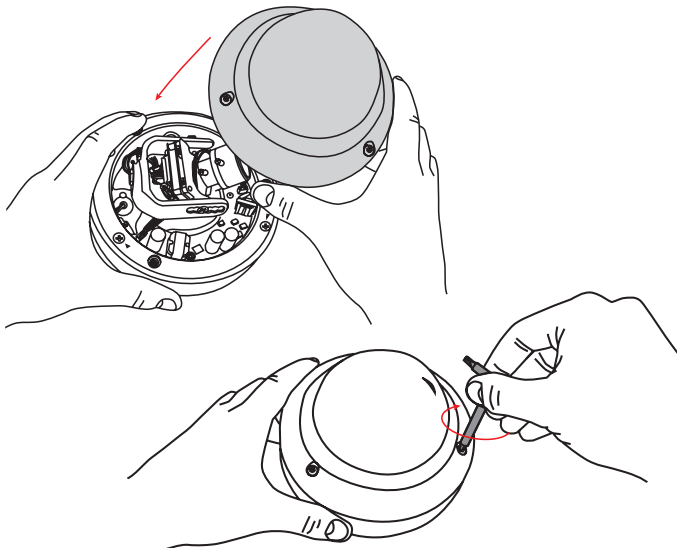


- b. Align the key on the lip of the inner case with the slot on the wall bracket when reassembling. If these are not aligned properly the weather proof seal will be comprised, allowing water to leak into the camera.



5. REASSEMBLE

- a. Replace dome cover, then use the Torx wrench (that came with the Vandal X camera) to tighten the 3 Torx screws that hold the dome assembly onto the wall bracket.



- b. Make sure each screw is tight to ensure superior weather resistance.

